

INSTRUMENT APPROACH CHART - ICAO

AD ELEV : 17

Bearings are magnetic (true)
ELEV, ALT and HGT in FT

Copenhagen APP : 119.805

Kastrup TWR : 118.105 118.705

ATIS : 122.755

EGNOS
CH : 79832
E04A

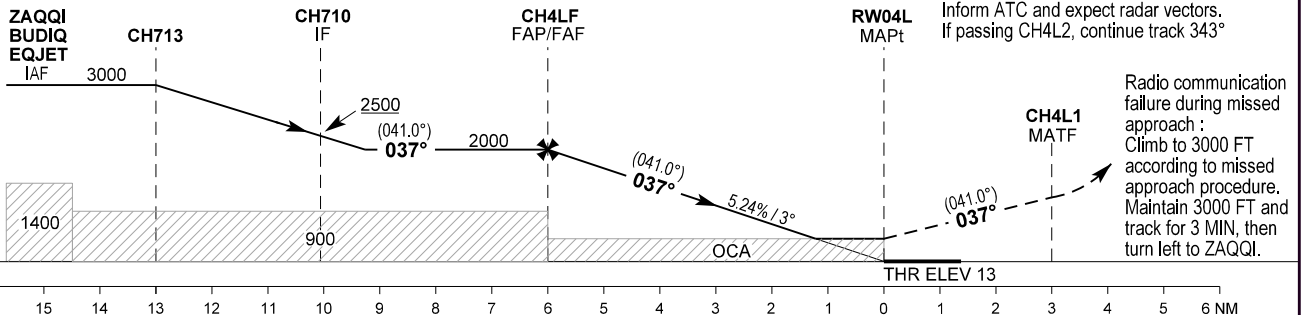
AD 2 - EKCH
RNP RWY 04L - 1
København / Kastrup

Changes : Initial approach procedure changed. New WPT ZAQQI, EQJET, CH710 and CH713 added. WPT ERPUK and DOPEM withdrawn from chart. OCA (H) Circling A and B changed.



TA 5000

RDH 49



Missed approach:
Climb straight ahead until passing CH4L1, then turn left and climb inbound CH4L2 to 3000 FT. Inform ATC and expect radar vectors. If passing CH4L2, continue track 343°

Radio communication failure during missed approach :
Climb to 3000 FT according to missed approach procedure. Maintain 3000 FT and track for 3 MIN, then turn left to ZAQQI.

OCA (H)	A	B	C	D
LPV	148 (135)	158 (145)	168 (155)	178 (165)
LNAV / VNAV *	225 (212)	235 (222)	245 (232)	254 (241)
LNAV	420 (400)			
Circling **	560 (540)	590 (570)	1010 (990)	1010 (990)

SPECIAL CONDITIONS

* Not to be used below -25°C or above 61°C.

** Circling for CAT C and D is not approved N of AD between center line RWY 22R and center line RWY 12.

DIST to RWY 04L	NM	1	2	3	4	5
Nominal altitude		382	703	1026	1351	1677