

INSTRUMENT APPROACH CHART - ICAO

AD ELEV : 82

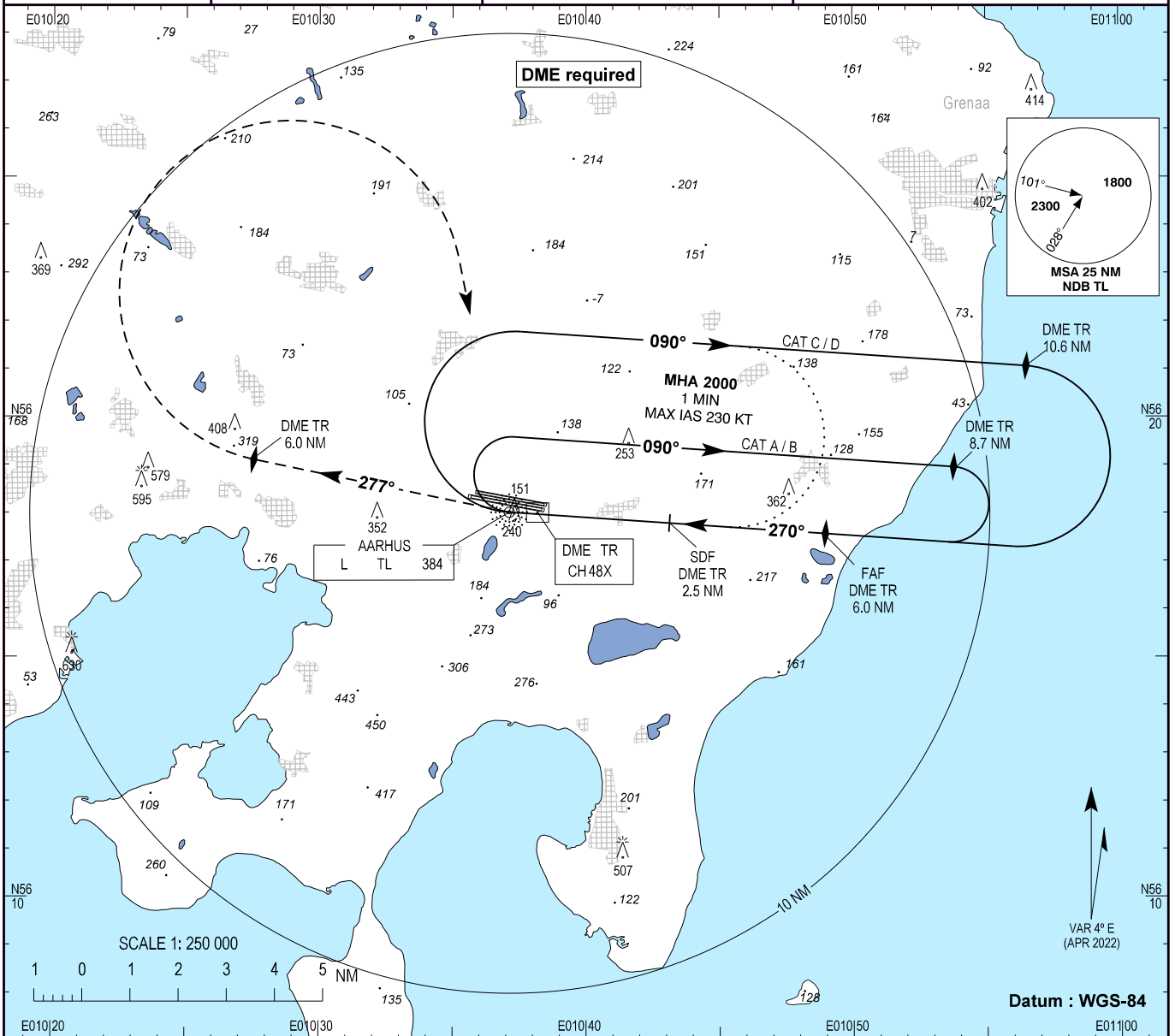
Bearings are magnetic
ELEV, ALT and HGT in FT

Aarhus APP : 119.280

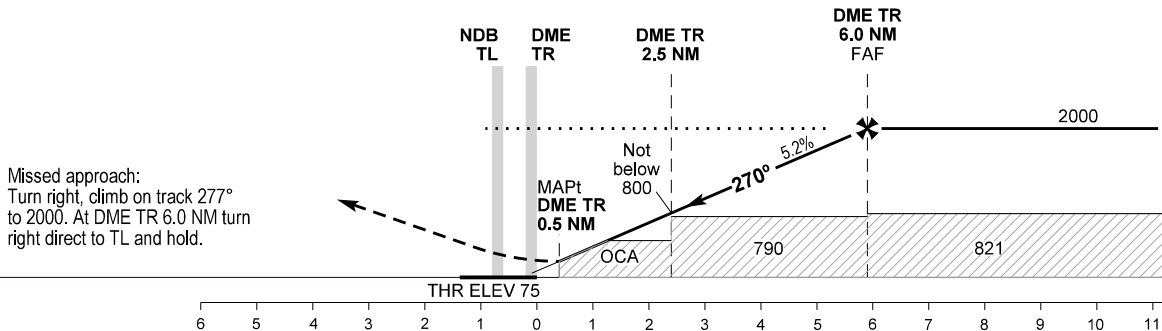
Aarhus TWR : 118.530

ATIS : 125.155

**AD 2 - EKAH
NDB RWY 28L
Aarhus**



TA 3000



Missed approach:
Turn right, climb on track 277°
to 2000. At DME TR 6.0 NM turn
right direct to TL and hold.

Changes : ATIS FREQ changed.

OCA (H)	A	B	C	D	SPECIAL CONDITIONS
NDB*	480 (410)	480 (410)	480 (410)	500 (430)	*Cross DME TR 2.5 NM not below 800
Circling	570 (490)	680 (600)	1060 (980)	1180 (1100)	

Timing not authorized for defining MAPt
No turn before MAPt

DME TR	NM	6	5	4	3	2	1
DIST to THR	NM	5.86	4.86	3.86	2.86	1.86	0.86
ALT		2000	1675	1355	1040	720	400