

# INSTRUMENT APPROACH CHART - ICAO

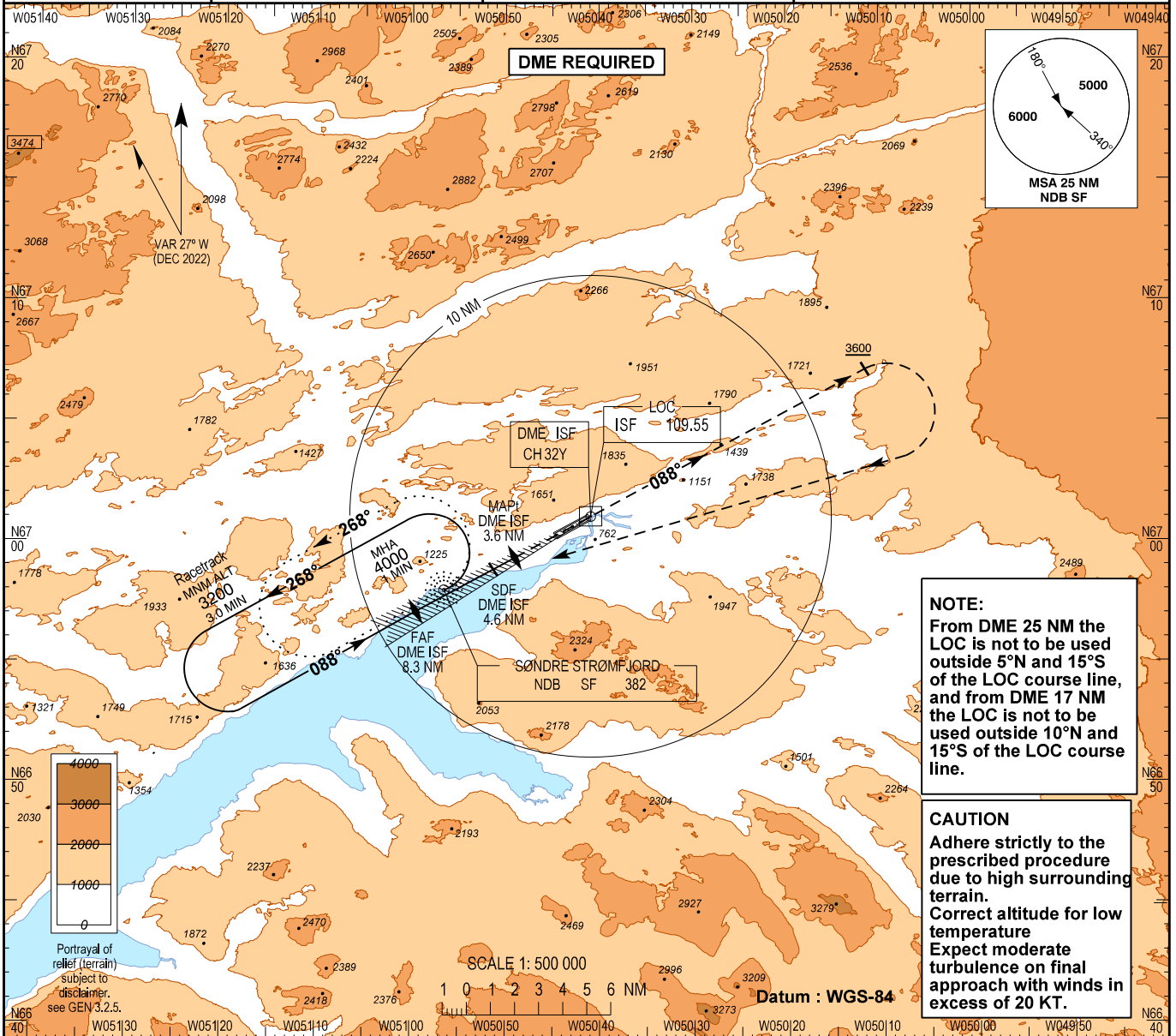
AD ELEV : 165

Bearings are magnetic  
ELEV, ALT and HGT in FT

Sondrestrom APP : 126.200

Sondrestrom TWR : 118.300

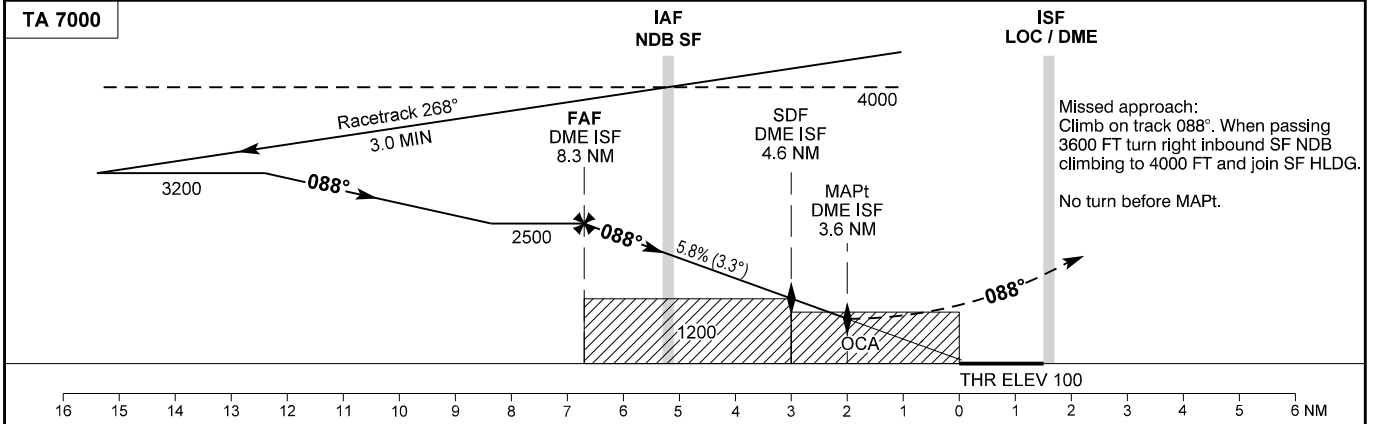
AD 2 - BGSF  
LOC Y RWY 09  
(ACFT CAT A / B)  
Kangerlussuaq



**NOTE:**  
From DME 25 NM the LOC is not to be used outside 5°N and 15°S of the LOC course line, and from DME 17 NM the LOC is not to be used outside 10°N and 15°S of the LOC course line.

**CAUTION**  
Adhere strictly to the prescribed procedure due to high surrounding terrain.  
Correct altitude for low temperature  
Expect moderate turbulence on final approach with winds in excess of 20 KT.

Changes : IAF and holding ALT added in profile view.



OCA (H)	A	B	SPECIAL CONDITIONS	DME ISF	NM	8	7	6	5	4
LOC / DME	Climb 2.5%	1210 (1110)	1230 (1130)	DIST to THR	NM	6.4	5.4	4.4	3.4	2.4
LOC / DME	Climb 5.0%	850 (750)	870 (770)	ALT	FT	2400	2050	1690	1340	980

Circling *		1500 (1335)	1900 (1735)	* Only south of aerodrome						
Time to MAPt (DME INK 3.6 NM) from FAF (DME INK 8.3 NM) - DIST 4.7 NM **										
GS	KT	80	100	120	140	160				
Time	MIN:SEC	03:32	02:49	02:21	02:01	01:46				
ROD	FT/MIN	470	590	710	830	940				

\*\* Timing not authorized for defining the MAPt.