

INSTRUMENT APPROACH CHART - ICAO

AD ELEV : 17

Bearings are magnetic (true)
ELEV, ALT and HGT in FT

Copenhagen APP : 119.805

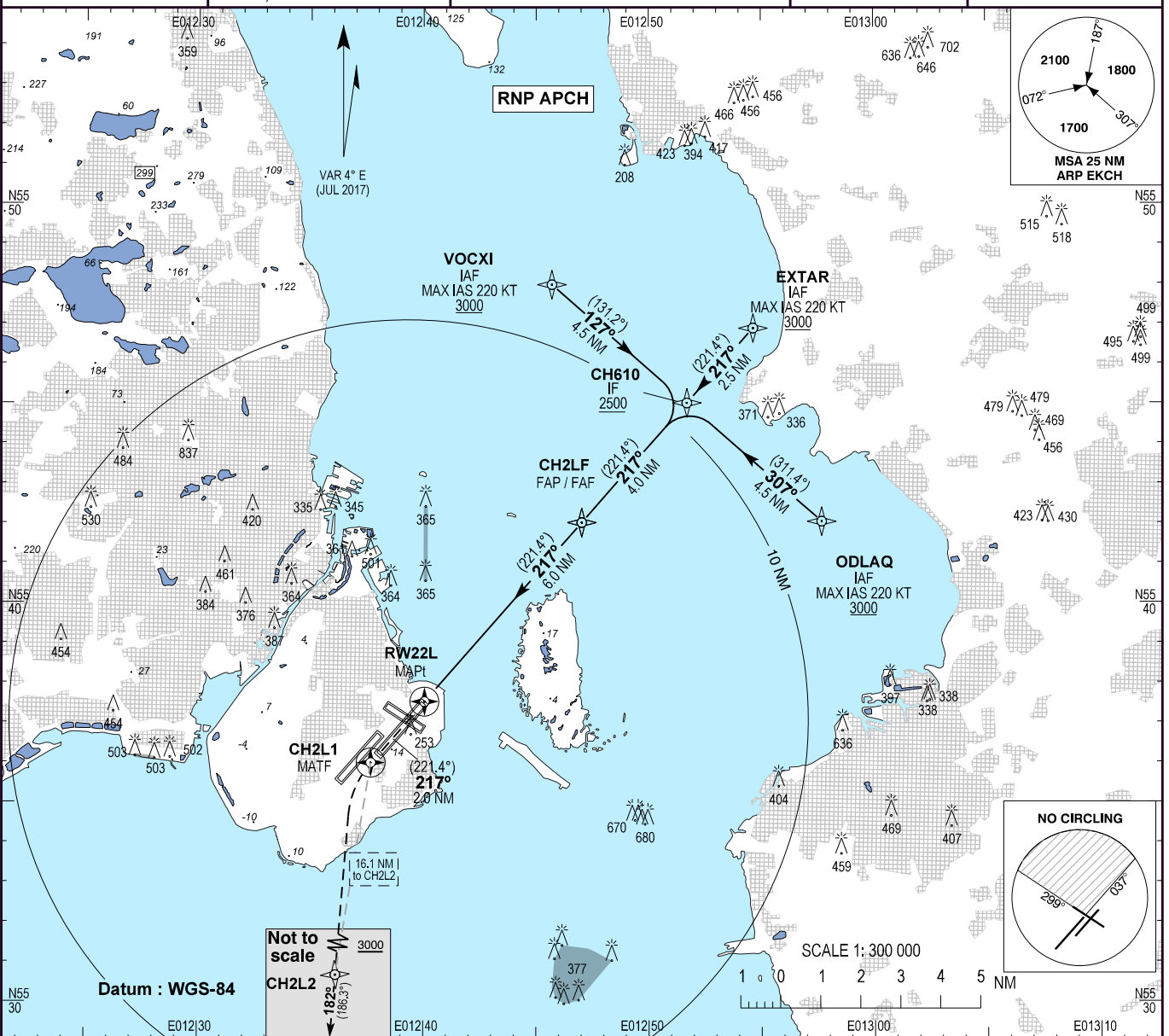
Kastrup TWR : 118.105 118.705

ATIS : 122.755

EGNOS
CH : 48570
E22A

AD 2 - EKCH
RNP RWY 22L - 1
København / Kastrup

Changes : RNAV transition revised. WPT ABEGI and ADOVI withdrawn from chart. New WPT CH610, VOCXI and ODLAQ added. OBST EKCH ATC TWR added. Editorial changes.

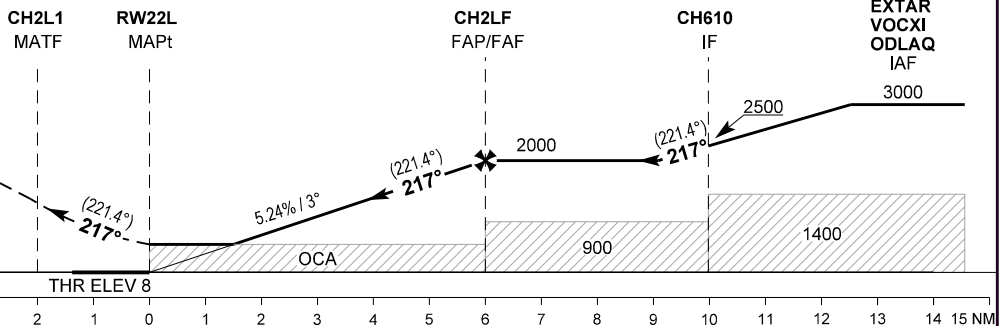


TA 5000

RDH 53

Missed approach:
Climb straight ahead to CH2L1,
turn left and track to CH2L2,
climbing to 3000.
Inform ATC and expect radar
vectoring. If passing CH2L2,
continue track 182°.

Radio communication failure
during missed approach :
Climb to 3000 FT according
to missed approach procedure.
Maintain 3000 FT and track for
3 MIN, then turn left to ODLAQ
for new APCH.



	A	B	C	D/DL
OCA (H)	A	B	C	D/DL
LPV	141 (133)	149 (141)	160 (152)	173 (165)
LNAV / VNAV *	320 (312)	330 (322)	340 (332)	350 (342)
LNAV	510 (500)			
Circling **	560 (550)	590 (580)	1010 (1000)	1010 (1000)

SPECIAL CONDITIONS	
*	Not to be used below -25°C or above 61°C.
**	Circling for CAT C and D/DL is not approved N of AD between center line RWY 22R and center line RWY 12.

DIST to RW22L	NM	2	3	4	5
Nominal altitude		700	1015	1335	1650