

INSTRUMENT APPROACH CHART - ICAO

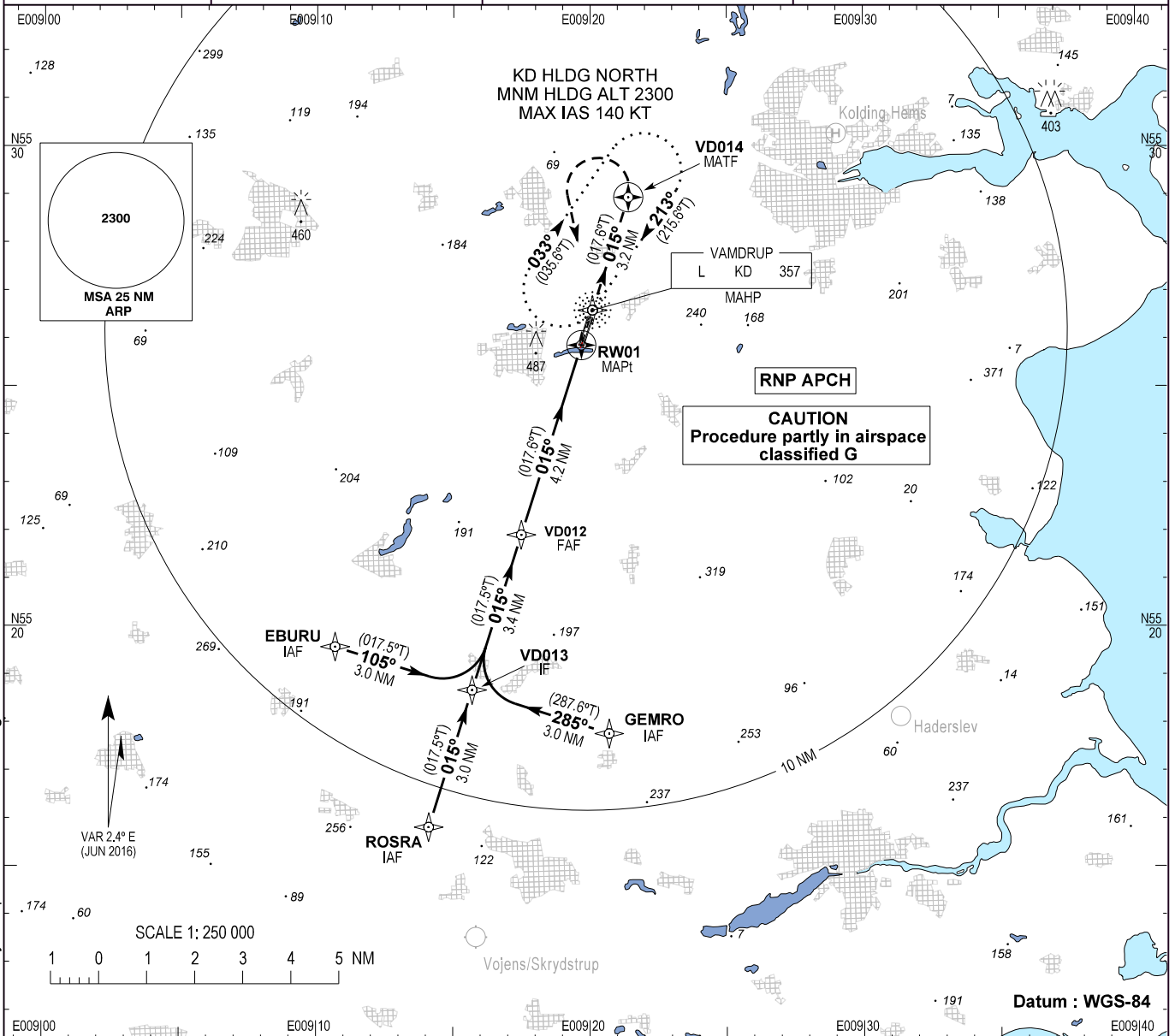
AD ELEV : 141

Bearings are magnetic (true)
ELEV, ALT and HGT in FT

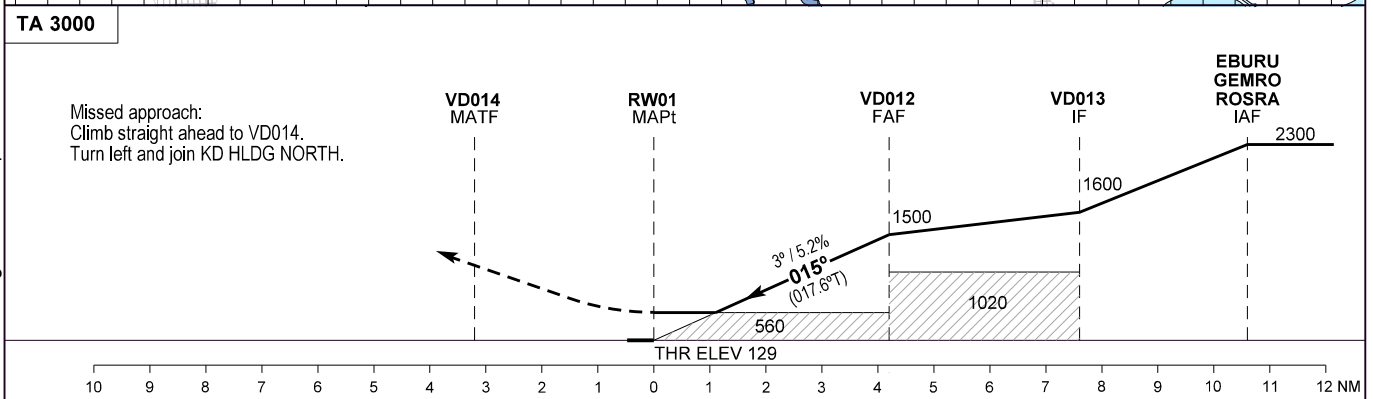
Skrydstrup APP : 124.100 315.100

Vamdrup Information : 118.650

AD 2 - EKVD
RNP RWY 01 - 1
Kolding / Vamdrup



Changes : AD ELEV changed. Vamdrup Information FREQ and Skrydstrup APP UHF FREQ changed.



OCA (H)	A	B	SPECIAL CONDITIONS					
LNAV	560 (430)	560 (430)						
Circling*	590 (450)	690 (550)	*East of aerodrome only					
GS	70	80	90	100	110	120	130	140
VD012 - RW01 (4.2 NM)**	3:33	3:07	2:46	2:29	2:16	2:05	1:55	1:47
Rate of Descent	371	425	478	531	584	637	690	743
DIST to RW01 NM	1.0	2.0	3.0	4.0				
Altitude 3.0° Descent	500	815	1135	1450				

**Timing not authorized for defining the MAPt