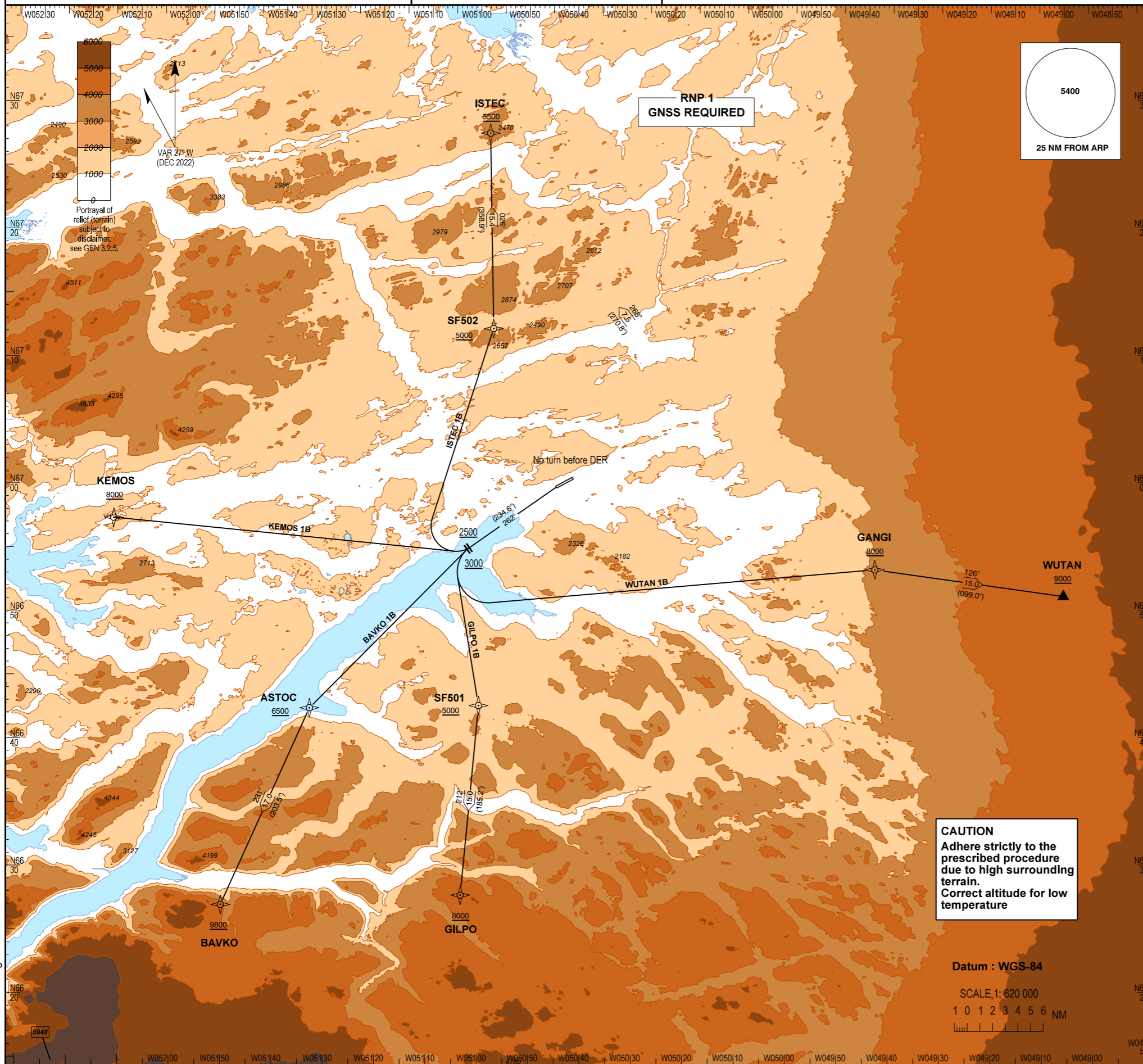


**STANDARD DEPARTURE CHART -
INSTRUMENT (SID) - ICAO**

Transition altitude : 7000
Bearings are magnetic (true)
ELEV / ALT in FT
DIST in NM

AD 2 - BGSF
RNP 1 SID RWY 27 - 1
Kangerlussuaq
ISTEC 1B, BAVKO 1B, GILPO 1B, KEMOS 1B, WUTAN 1B



GS KT	100	150	200	250	300
5.1% Climb gradient FT/MIN	515	775	1030	1290	1550
3.3% Climb gradient FT/MIN	335	500	670	835	1000

CAUTION
Adhere strictly to the prescribed procedure due to high surrounding terrain.
Correct altitude for low temperature

Datum : WGS-84
SCALE 1:620 000
1 0 1 2 3 4 5 6 NM

Changes : New chart.