

INSTRUMENT APPROACH CHART - ICAO

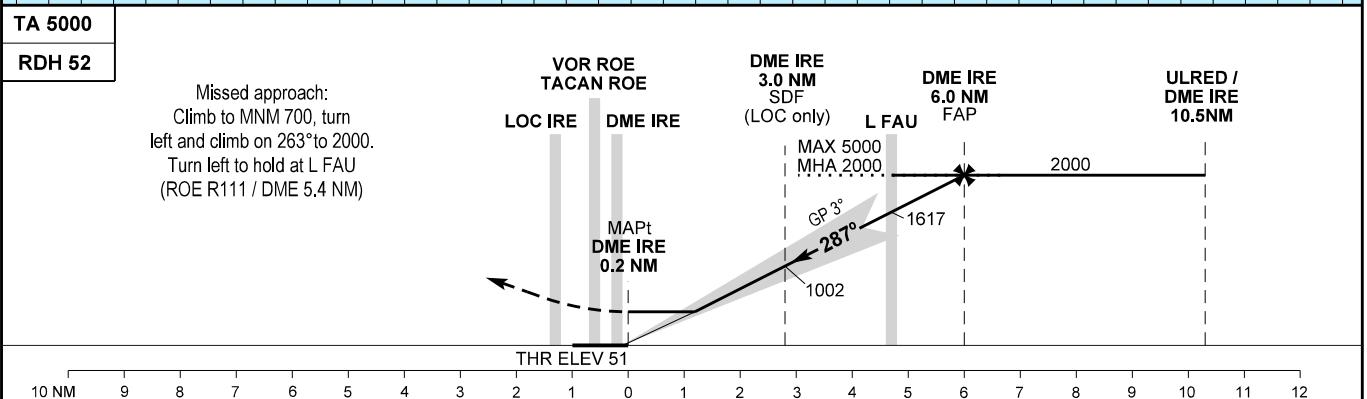
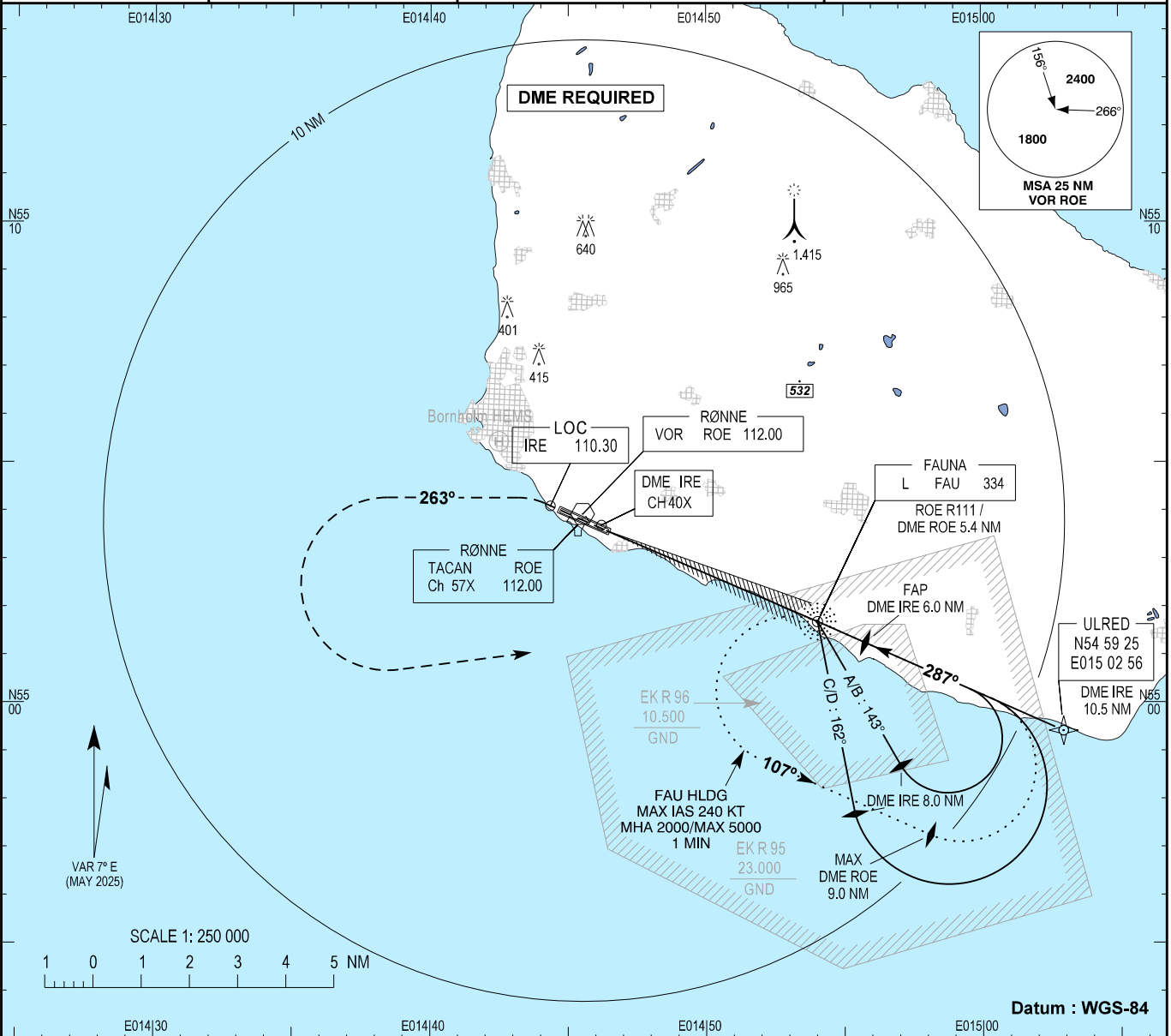
AD ELEV : 52

Bearings are magnetic
ELEV, ALT and HGT in FT

Rønne Tower : 118.330 257.800

AD 2 - EKRN
ILS RWY 29
Bornholm / Rønne

Changes : Magnetic variation and directions changed. Circling minima, SDF altitude and GP verification corrected. HLDG name changed and MAX HLDG altitude and SPD added. Editorial changes.



OCA (H)	A	B	C	D	SPECIAL CONDITIONS
ILS / DME	216 (165)	228 (177)	236 (185)	247 (196)	
GP INOP	430 (380)	430 (380)	430 (380)	430 (380)	
Circling*	450 (400)	630 (580)	730 (680)	750 (700)	*SW of AD only

DME IRE	2	3	4	5	6	7	8	9	DME ROE	2	3	4	5	6	7	8	9
DIST to THR (NM)	1.8	2.8	3.8	4.8	5.8	6.8	7.8	8.8	DIST to THR (NM)	1.4	2.4	3.4	4.4	5.4	6.4	7.4	8.4
Nominal ALT	690	1010	1330	1650	1970	2280	2600	2920	Nominal ALT	545	860	1175	1490	1805	2125	2440	2760