

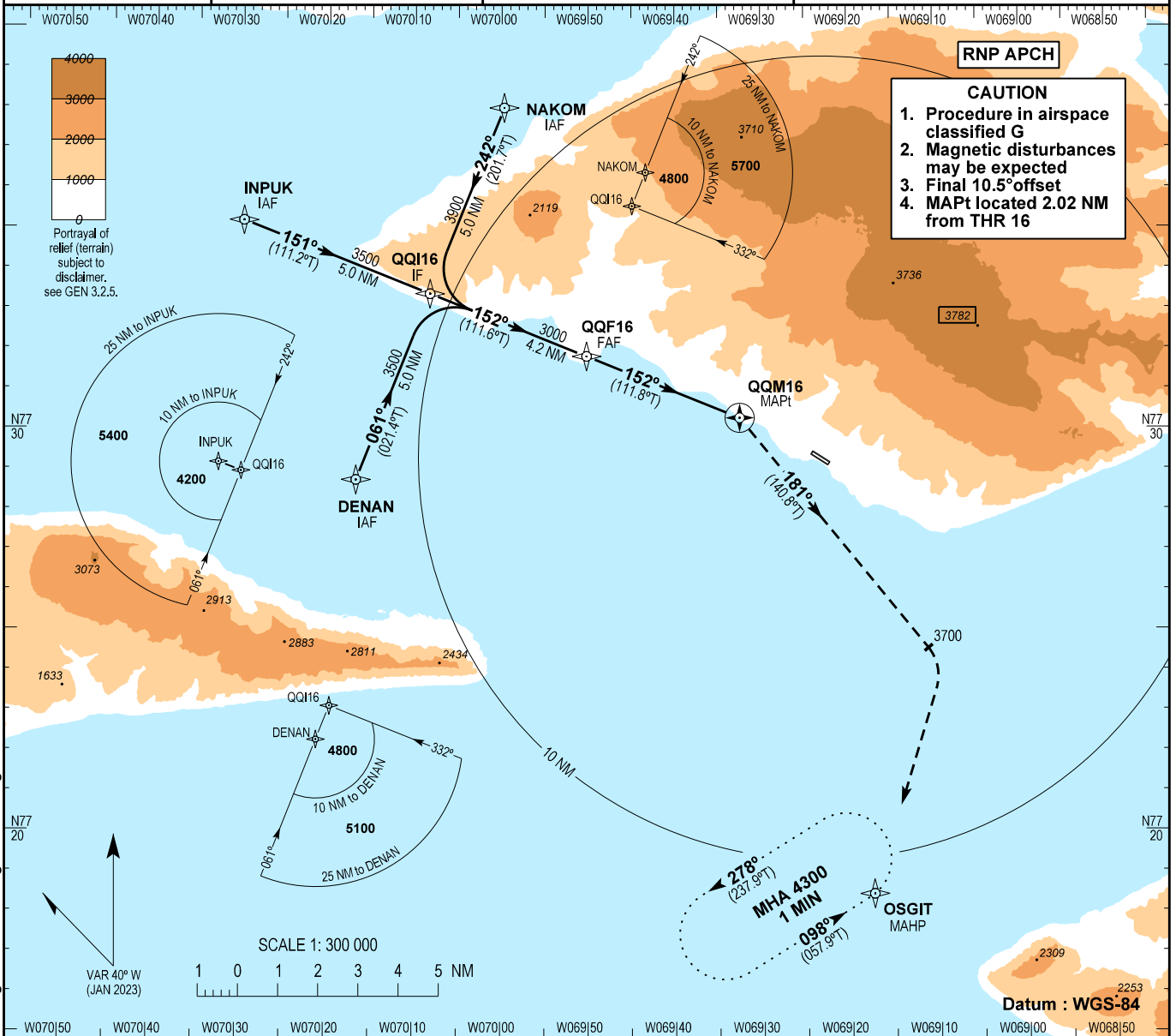
**INSTRUMENT
APPROACH
CHART - ICAO**

AD ELEV : 51

Bearings are magnetic (true)
ELEV, ALT and HGT in FT

Qaanaaq AFIS : 118.100

**AD 2 - BGQQ
RNP A - 1
Qaanaaq**

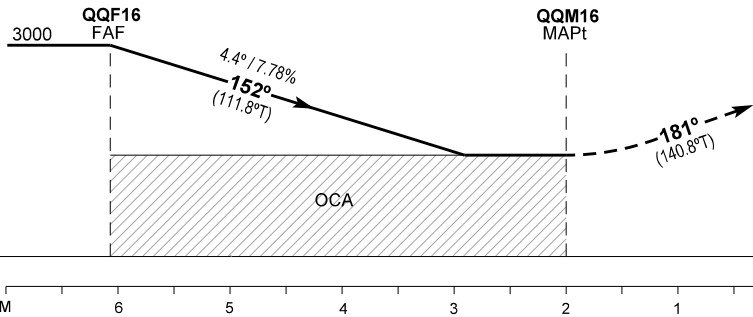


CAUTION

1. Procedure in airspace classified G
2. Magnetic disturbances may be expected
3. Final 10.5° offset
4. MAPt located 2.02 NM from THR 16

Changes : VAR and MAG bearings changed. WP names changed. Chart designator changed.

TA 6500



Missed approach:
Turn right (Max IAS 130 kt) climb on course 181°,
passing 3700 turn right direct OSGIT
and hold at 4300.

OCA (H)	A	B	Remarks			
Circling*	1450 (1399)	1480 (1429)	*West of aerodrome only			
Time from QQF16 to QQM16 - DIST 4.1 NM**						
GS	KT	80	100	120	140	160
Time	MIN:SEC	3:06	2:29	2:04	1:46	1:33
ROD 4.4°/ 7.78%	FT/MIN	630	790	950	1100	1260

DIST to QQM16 NM	1.0	2.0	3.0	4.0
Altitude 4.4° Descent	1520	1995	2470	2940

**Timing not authorized for defining the MAPt