

INSTRUMENT APPROACH CHART - ICAO

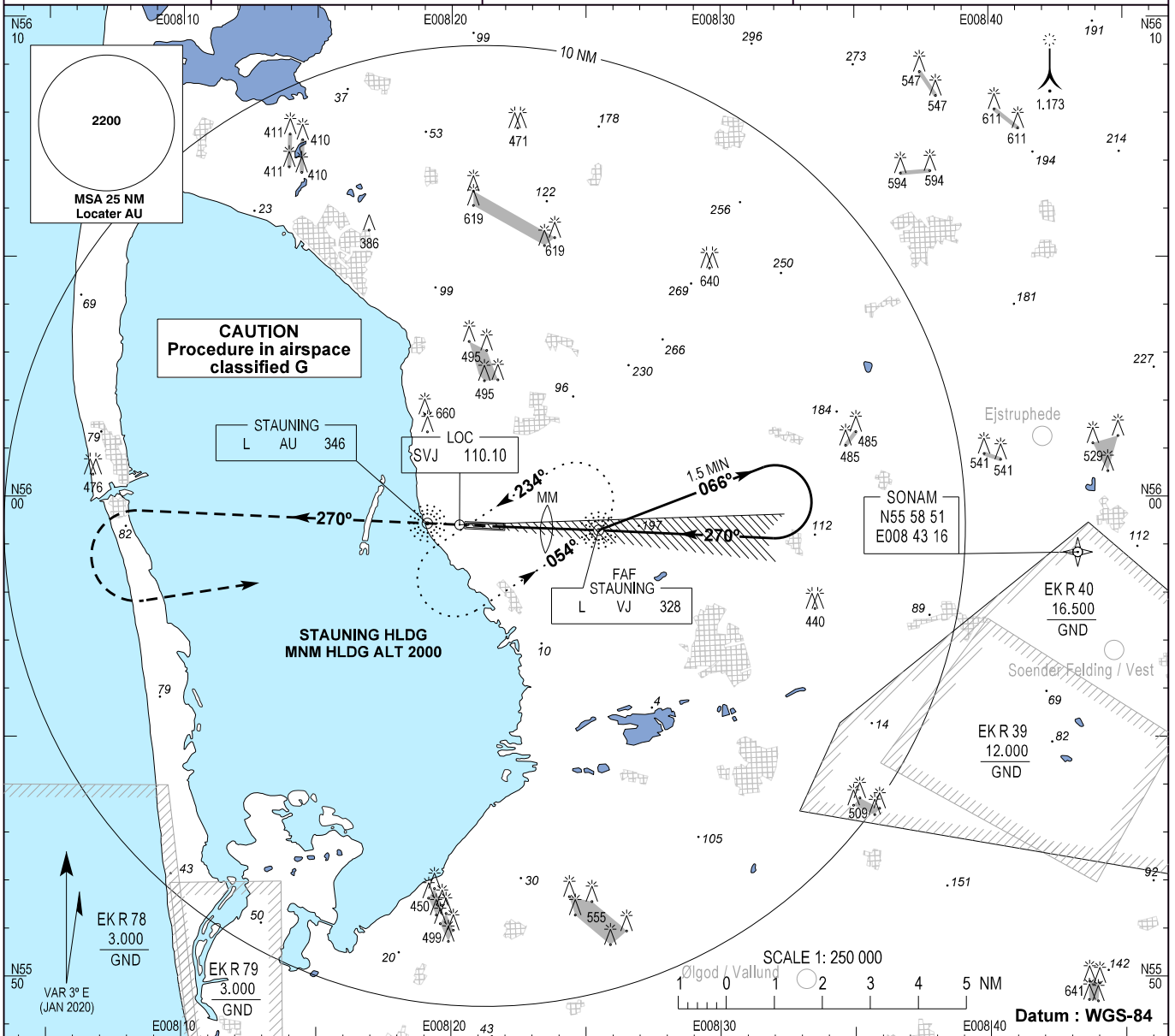
AD ELEV : 17

Bearings are magnetic
ELEV, ALT and HGT in FT

Billund APP : 127.580

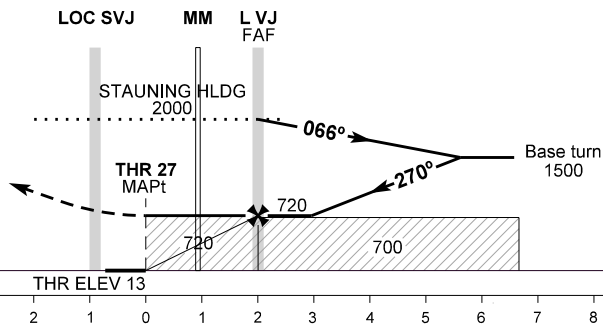
Stauning Information : 121.405

**AD 2 - EKVJ
LOC 27
(ACFT CAT A / B)
Stauning**



TA 3000

Missed approach:
Climb on track 270° to 2000.
Left turn to hold at L VJ.



| OCA (H) | A | B | SPECIAL CONDITIONS | | |
|---|-----------|-----------|--------------------|-------|-------|
| LOC | 720 (700) | 720 (700) | | | |
| Circling* | 720 (700) | 720 (700) | *South of RWY only | | |
| Time from L VJ to THR 27 - DIST 1.99 NM | | | | | |
| GS (KT) | 60 | 80 | 100 | 120 | 140 |
| MIN : SEC | 01:59 | 01:30 | 01:12 | 01:00 | 00:51 |

Changes : AD EKSD, Spjald, withdrawn.