

# INSTRUMENT APPROACH CHART - ICAO

AD ELEV : 97

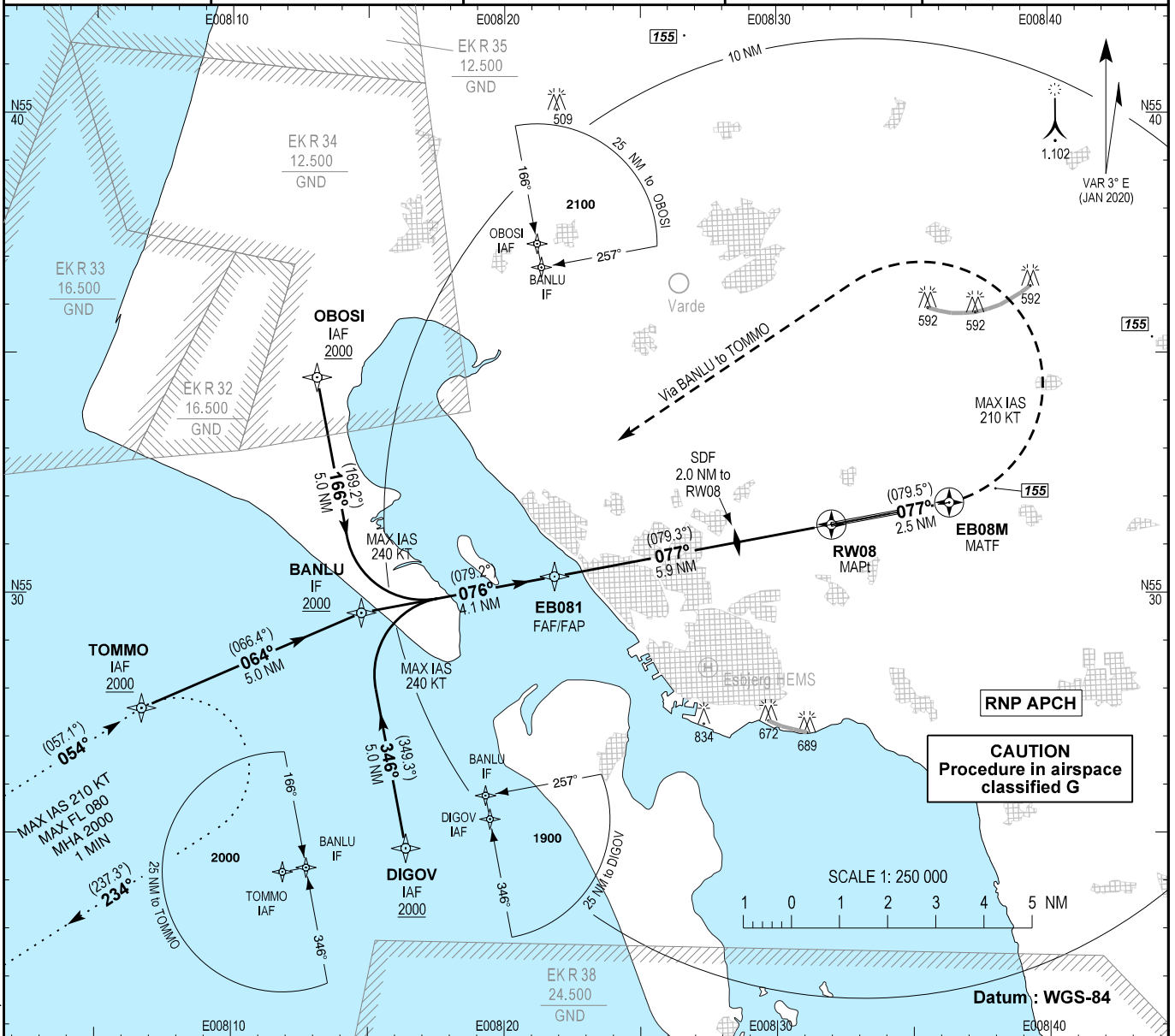
Bearings are magnetic (True) ELEV, ALT and HGT in FT

Billund APP : 127.580

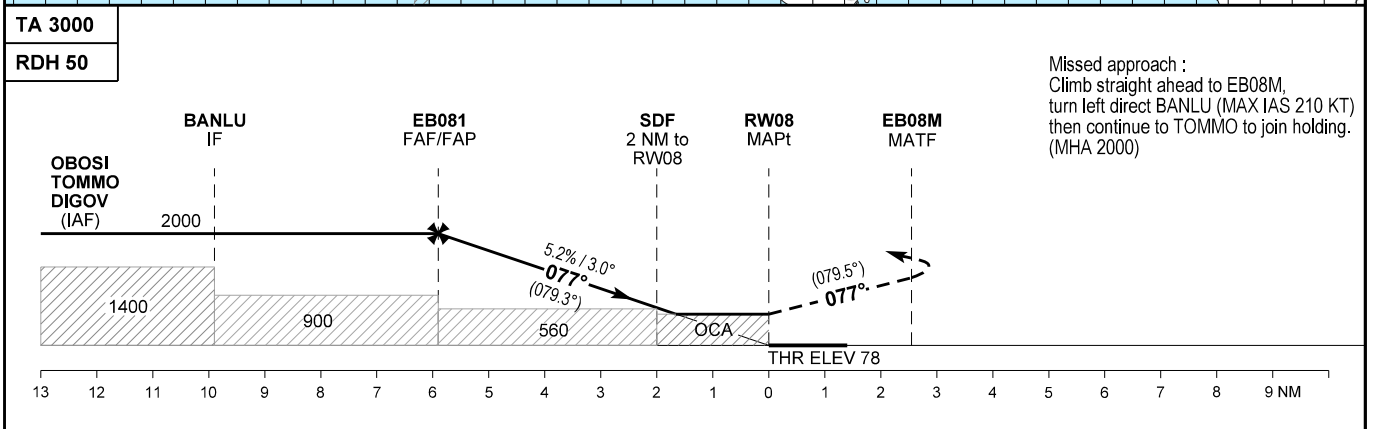
Esbjerg Information : 120.155

EGNOS  
Ch : 56064  
E08A

**AD 2 - EKEB**  
**RNP RWY 08 - 1**  
**Esbjerg**



Changes : E-K D 301 withdrawn. DIST RW08 - EB08M in mapview corrected.



OCA (H)	A	B	C	D	Note: * MNM TEMP -25°C. MAX TEMP 61°C. (BARO VNAV) ** N of RWY only						
LPV	225 (147)	234 (156)	243 (165)	255 (177)	Recommended LNAV Profile on Final Approach						
LNAV/VNAV *	340 (262)	350 (272)	360 (282)	370 (292)	DIST to THR (NM)						
LNAV	460 (390)				5	4	3	2			
Visual Circling (Heights AAL)	590 (500)	600 (510)	840 (750)**	990 (890)**	ALT (FT)						
					1720	1400	1090	770			
					GS (KT)						
					60	80	100	120	140	160	180
					ROD (FT/MIN)						
					318	425	531	637	743	849	955