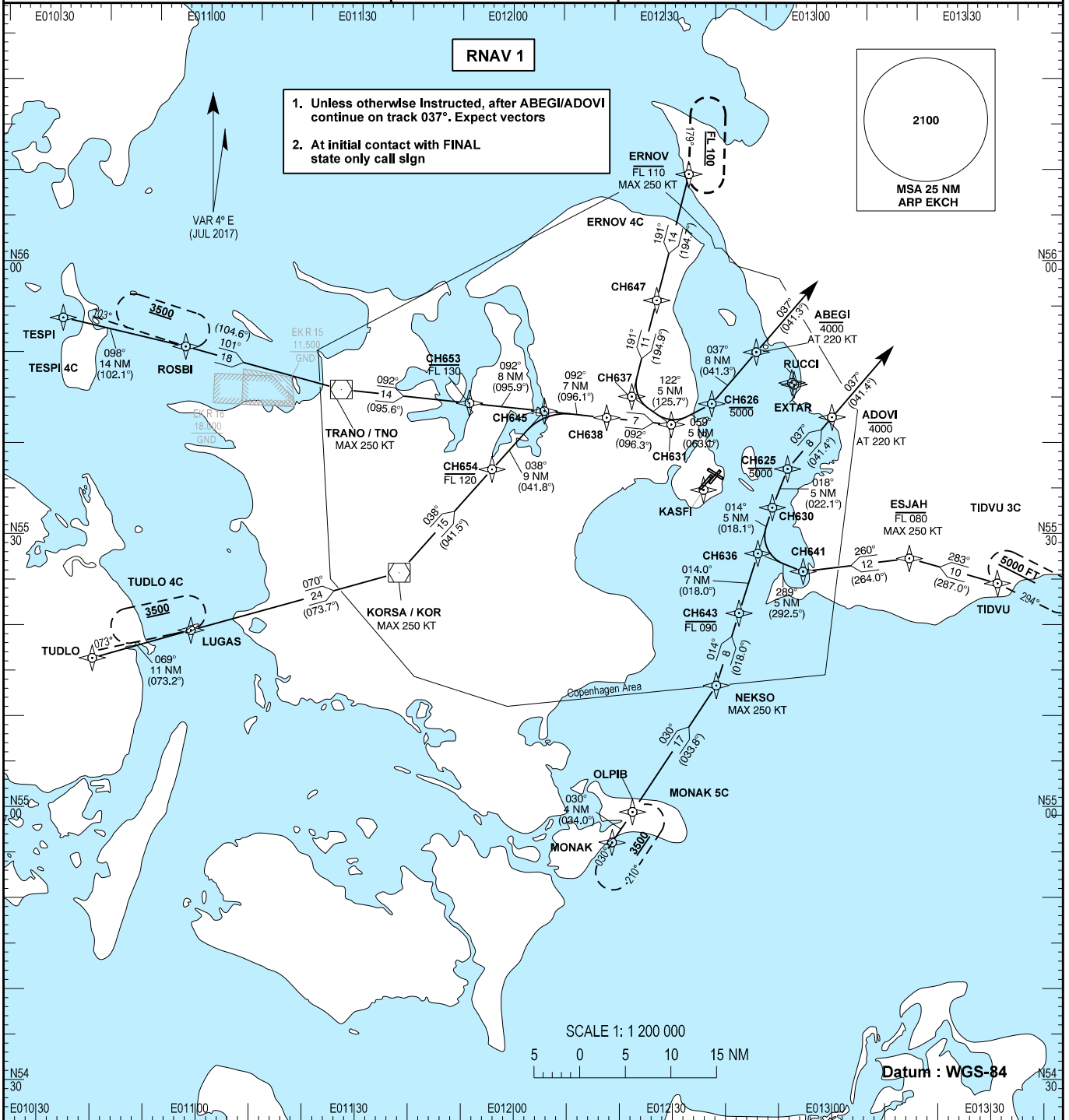


**STANDARD ARRIVAL CHART -
INSTRUMENT (STAR) - ICAO**

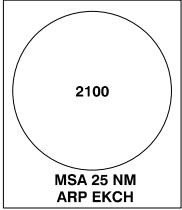
Transition altitude 5000
Bearings are magnetic (true)
ELEV / ALT in FT
DIST in NM

**AD 2 - EKCH
RNAV STAR RWY 22 L / R - 1
København / Kastrup**

TESPI 4C, TUDLO 4C, MONAK 5C, TIDVU 3C, ERNOV 4C



1. Unless otherwise instructed, after ABEGI/ADOVI continue on track 037°. Expect vectors
2. At initial contact with FINAL state only call slgn



Changes : - All STAR designators changed. Altitude restriction for WPT CH625 and CH626 added.

Description of waypoints see:
AD 2 - EKCH RNAV STAR RWY 22 L / R - 2