

**STANDARD ARRIVAL CHART -
INSTRUMENT (STAR) - ICAO**

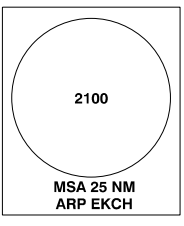
Transition altitude 5000
Bearings are magnetic (true)
ELEV / ALT in FT
DIST in NM

**AD 2 - EKCH
RNAV STAR RWY 30 - 1
København / Kastrup**

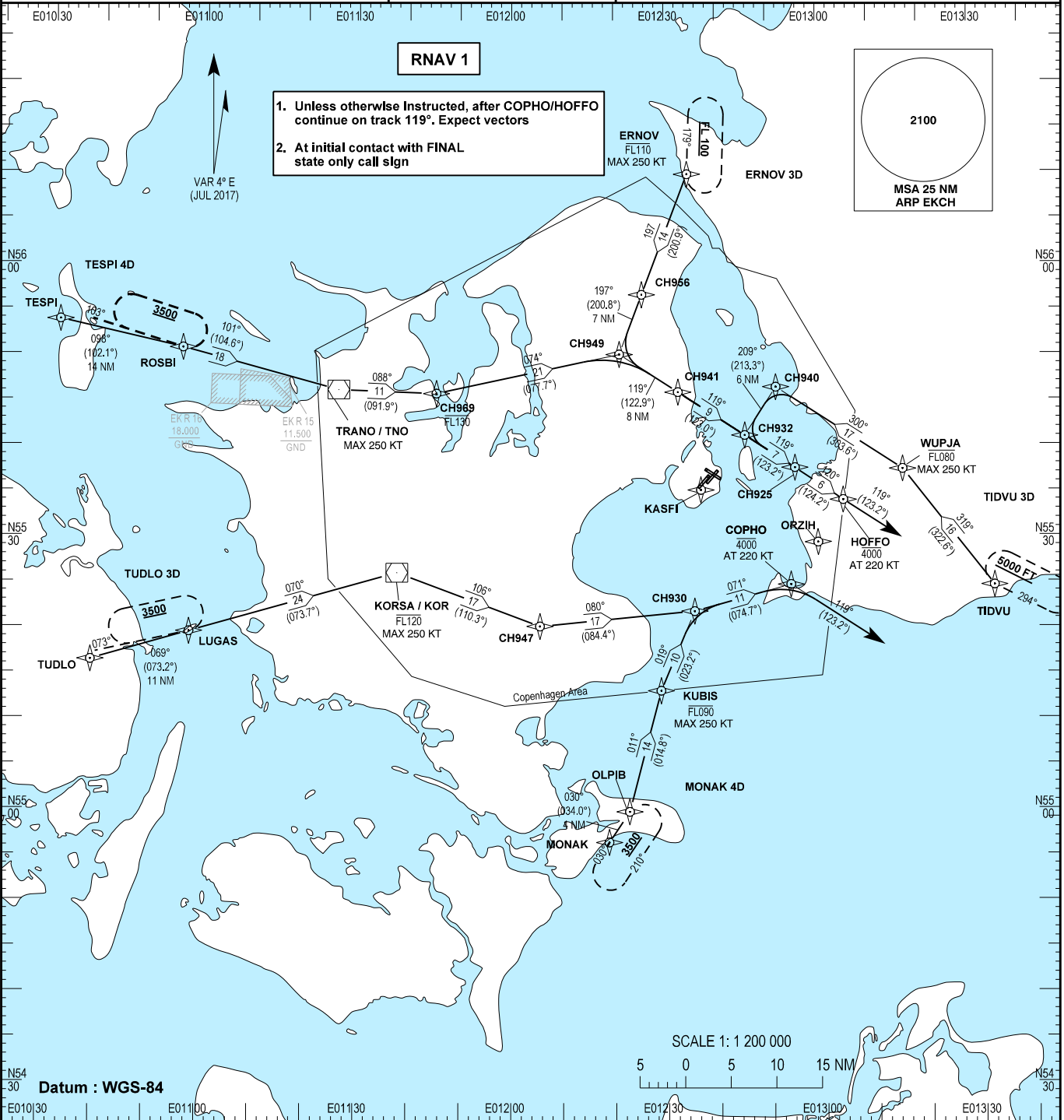
TESPI 4D, TUDLO 3D, MONAK 4D, TIDVU 3D, ERNOV 3D

RNAV 1

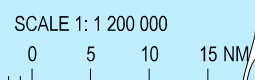
1. Unless otherwise instructed, after COPHO/HOFFO continue on track 119°. Expect vectors
2. At initial contact with FINAL state only call sign



Changes : CDA and KAS VOR/DME, WPT ULTIS, HUF0H withdrawn, RNAV STAR ERNOV, MONAK, TESPI and TIDVU changed, Note 1. changed.



Datum : WGS-84



Description of waypoints see:
AD 2 - EKCH RNAV STAR RWY 30 - 2