

# INSTRUMENT APPROACH CHART - ICAO

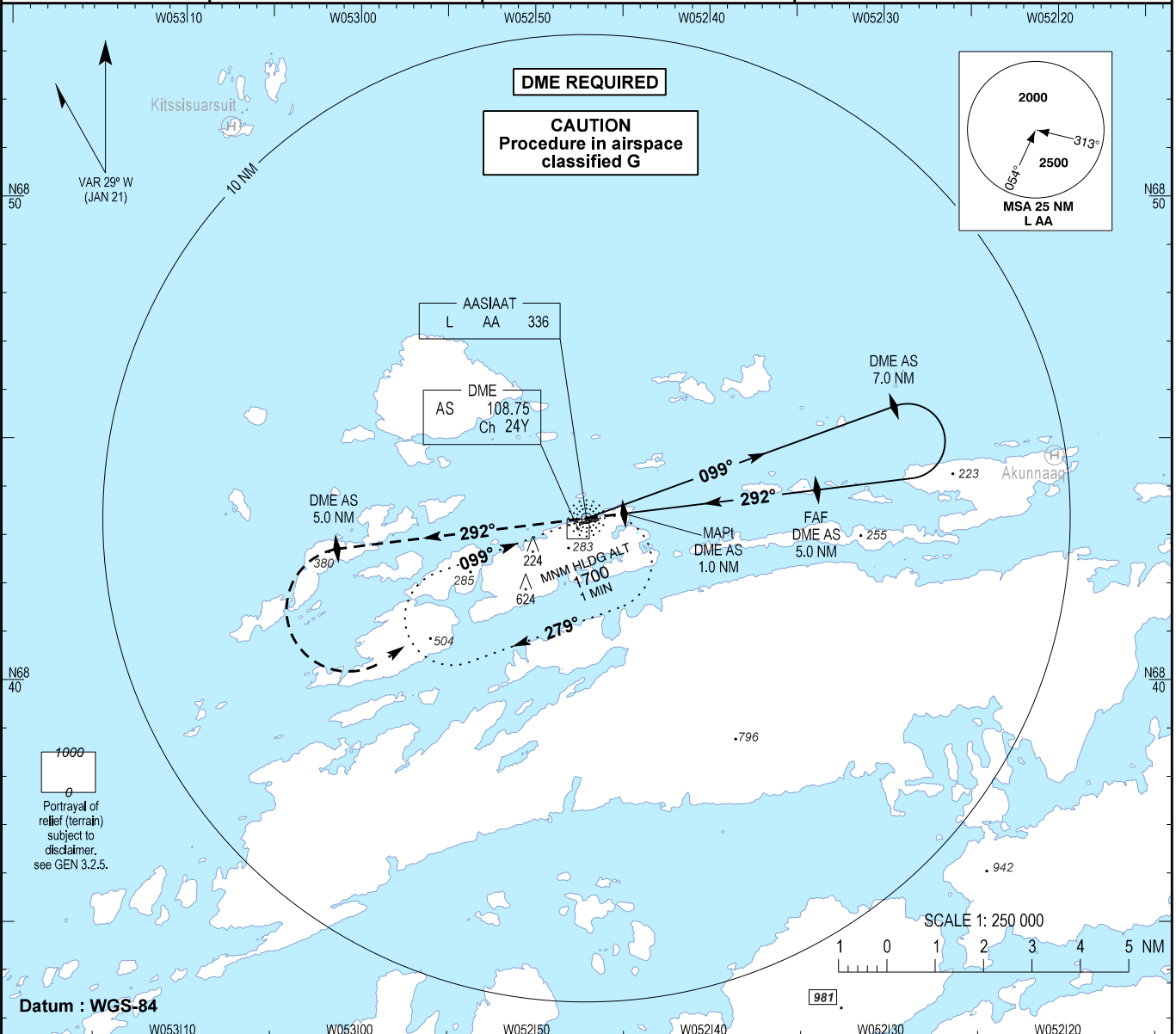
AD ELEV : 74

Bearings are magnetic  
ELEV, ALT and HGT in FT

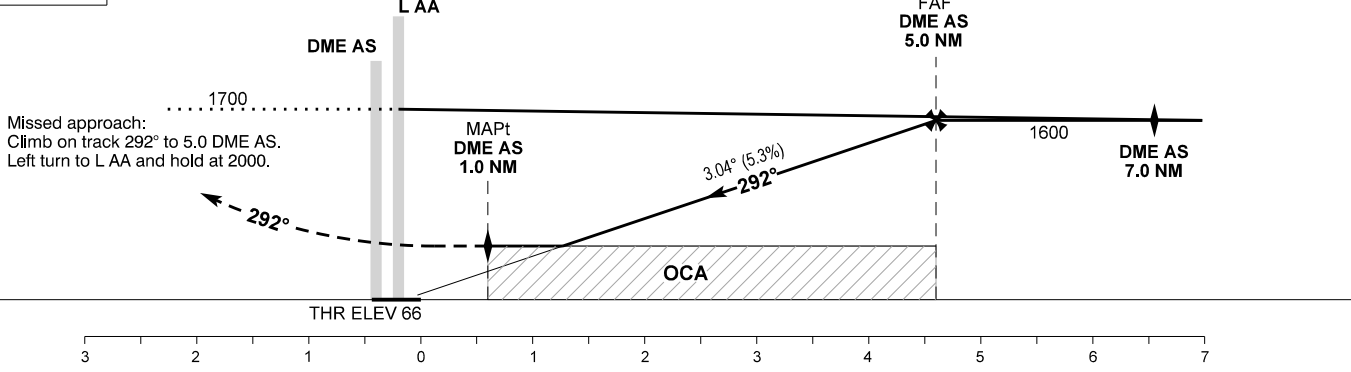
Aassiaat AFIS : 118.500

AD 2 - BGAA  
NDB RWY 29  
Aassiaat

Changes : Procedure and OCA (H) changed. VAR, MAG headings, MSA and missed approach changed. Time table added. OBST added, ref. AD 2.10. Only relevant spot elevations shown.



## TA 6000



OCA (H)	A	B	SPECIAL CONDITIONS
NDB *	470 (404)	490 (424)	* Beware of state minima for Aassiaat according to AD 2.22 section 3.5.
Circling **	580 (506)	580 (506)	** Only north of aerodrome

Time to MAPt (1.0 NM DME) from FAF (5.0 NM DME) - DIST 4.0 NM ***						
GS	KT	80	100	120	140	160
Time	MIN:SEC	03:00	02:24	02:00	01:43	01:30
Rate of descent 3.04° (5.3%)	FT/MIN	430	540	645	750	860

DME AS	2.0	3.0	4.0
ALT (3.04° descent)	630	950	1280

\*\*\* Timing not authorized for defining the MAPt.