

**INSTRUMENT  
APPROACH  
CHART - ICAO**

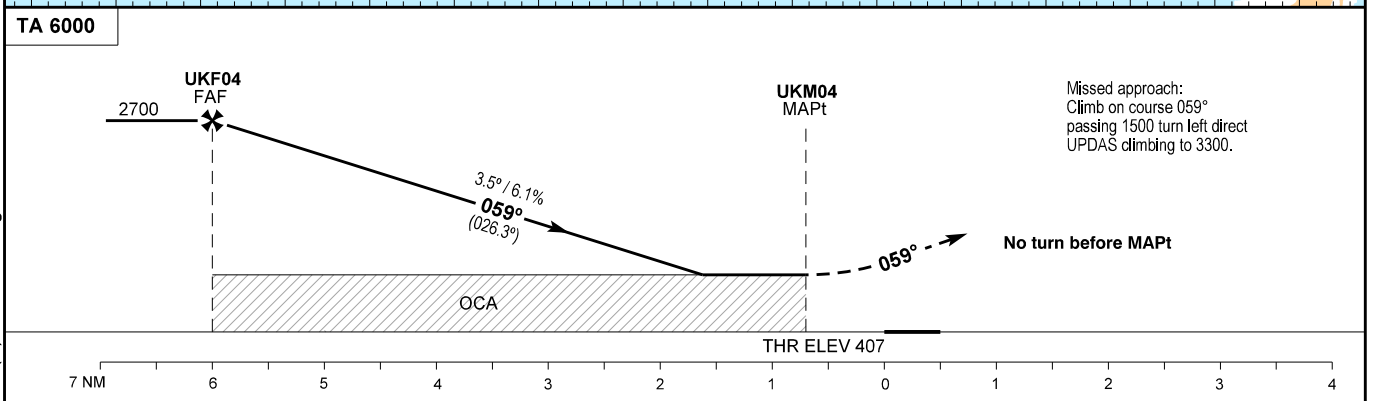
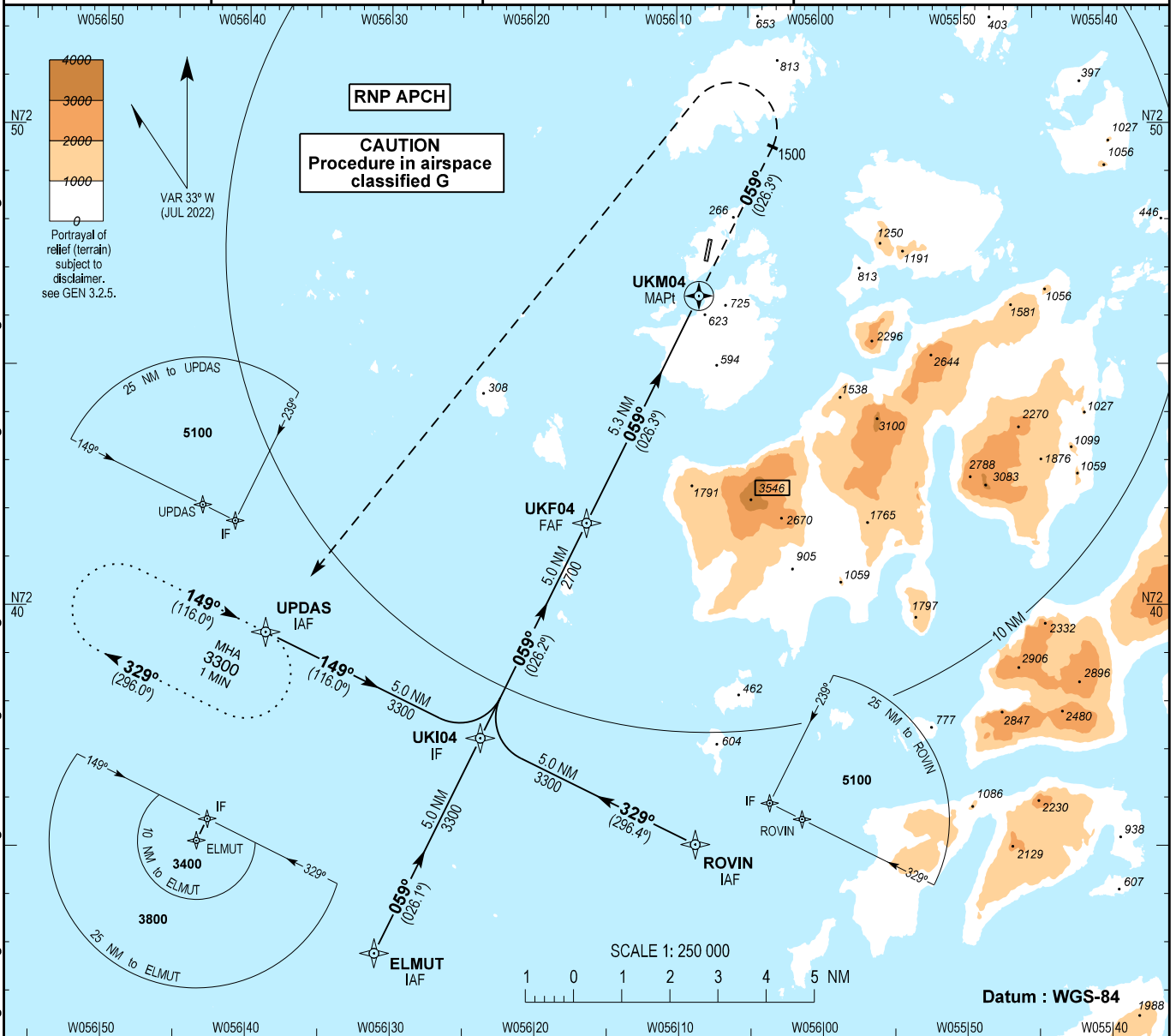
AD ELEV : 414

Bearings are magnetic (true)  
ELEV, ALT and HGT in FT

Upernavik AFIS : 118.100

**AD 2 - BGUK  
RNP A - 1  
Upernavik**

Changes : OCA (H) CAT A changed. VAR and MAG bearings changed. TAA changed. Chart designator changed. WP identifiers changed due change of RWY designators.



OCA (H)	A	B	SPECIAL CONDITIONS
Circling*	1030 (616)	1060 (646)	*West of aerodrome only

DIST to UKM04	NM	1.0	2.0	3.0	4.0	5.0
Altitude 3.5° Descent		1110	1480	1850	2220	2590

Time to MAPt (UKM04) from FAF (UKF04) - DIST 5.3 NM **						
GS	KT	80	100	120	140	160
Time	MIN:SEC	03:59	03:11	02:39	02:16	01:59
ROD 3.5°/6.1%	FT/MIN	500	620	740	870	990

\*\*Timing not authorized for defining the MAPt