

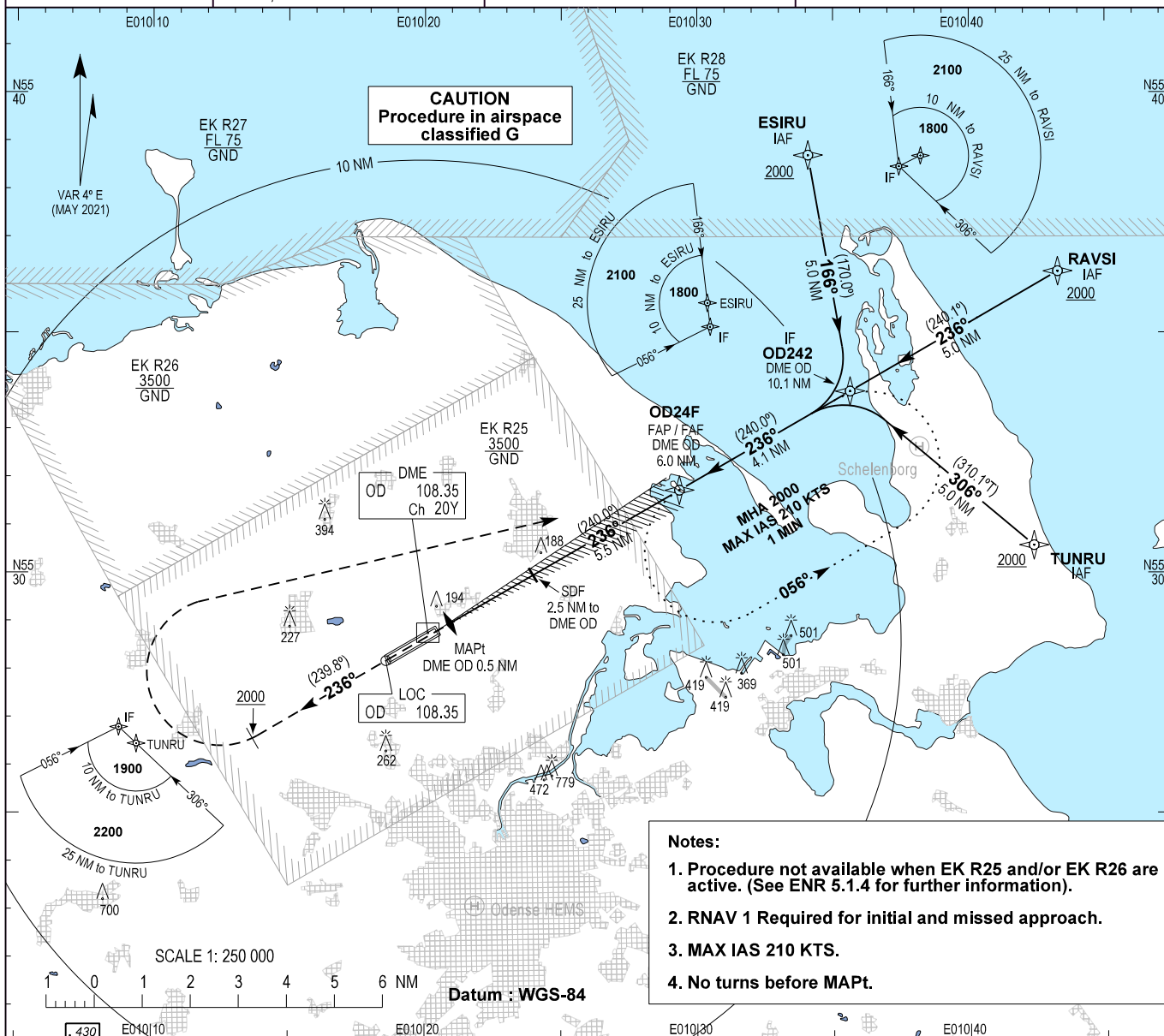
INSTRUMENT APPROACH CHART - ICAO

AD ELEV : 56

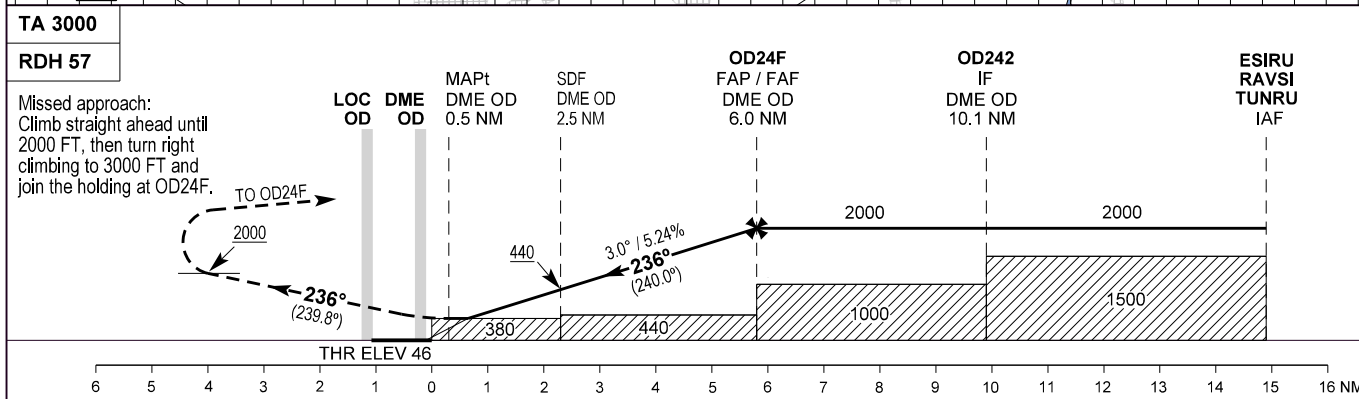
Bearings are magnetic (true)
ELEV, ALT and HGT in FT

Odense Information : 119.530

AD 2 - EKOD
ILS or LOC RWY 24 - 1
(CAT I)
Odense / Hans Christian Andersen Airport



- Notes:**
1. Procedure not available when EK R25 and/or EK R26 are active. (See ENR 5.1.4 for further information).
 2. RNAV 1 Required for initial and missed approach.
 3. MAX IAS 210 KTS.
 4. No turns before MAPt.



	OCA (H)				SPECIAL CONDITIONS
	A	B	C	D	
ILS (CAT I)	195 (149)	205 (159)	215 (169)	226 (180)	
LOC	380 (334)	380 (334)	380 (334)	380 (334)	
Circling*	500 (444)	550 (494)	790 (734)	790 (734)	*North of RWY only
DME OD	NM 2.0	3.0	4.0	5.0	6.0
DIST to THR	NM 1.8	2.8	3.8	4.8	5.8
ALT	690	1010	1320	1640	1960

Changes : Editorial change.