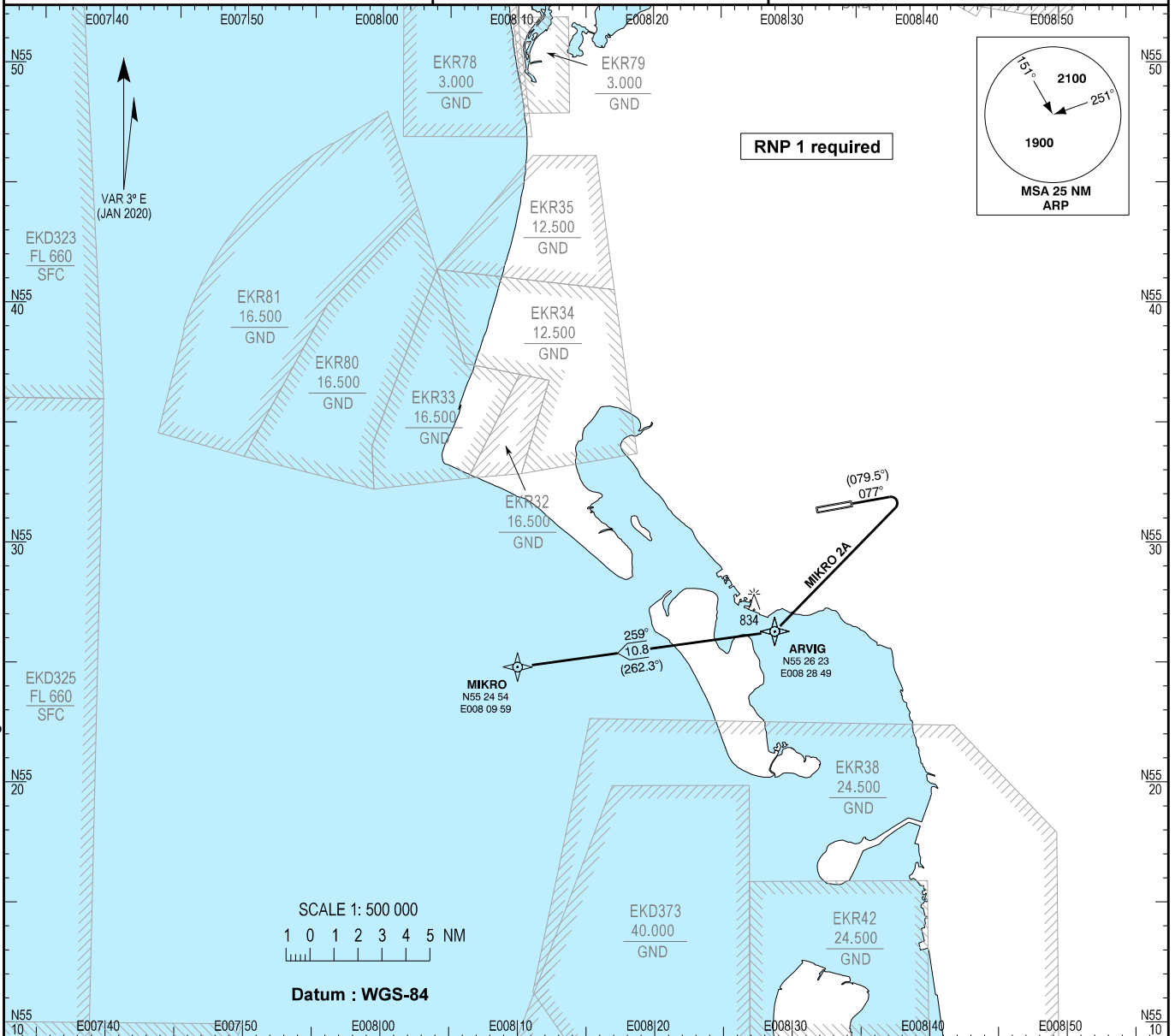


**STANDARD DEPARTURE CHART -
INSTRUMENT (SID) - ICAO**

Transition Altitude : 3000 FT

Bearings and tracks are magnetic (true)
ELEV and ALT in FT

**AD 2 - EKEB
HEL SID RNP RWY 08 - 1
MIKRO 2A
Esbjerg**



Changes : EK D 301 withdrawn. New danger areas EKD323 and EKD325 added. Editorial change.

MIKRO 2A

Climb on track 077° to 500 FT. Right turn DCT to ARVIG climbing to MNM 1800 FT, then right turn to MIKRO.

Radio Failure

In case of radio communication failure after TKOF, aircraft proceeding on a SID shall maintain the last received and acknowledged level until ARVIG and then climb to the assigned cruising level.