

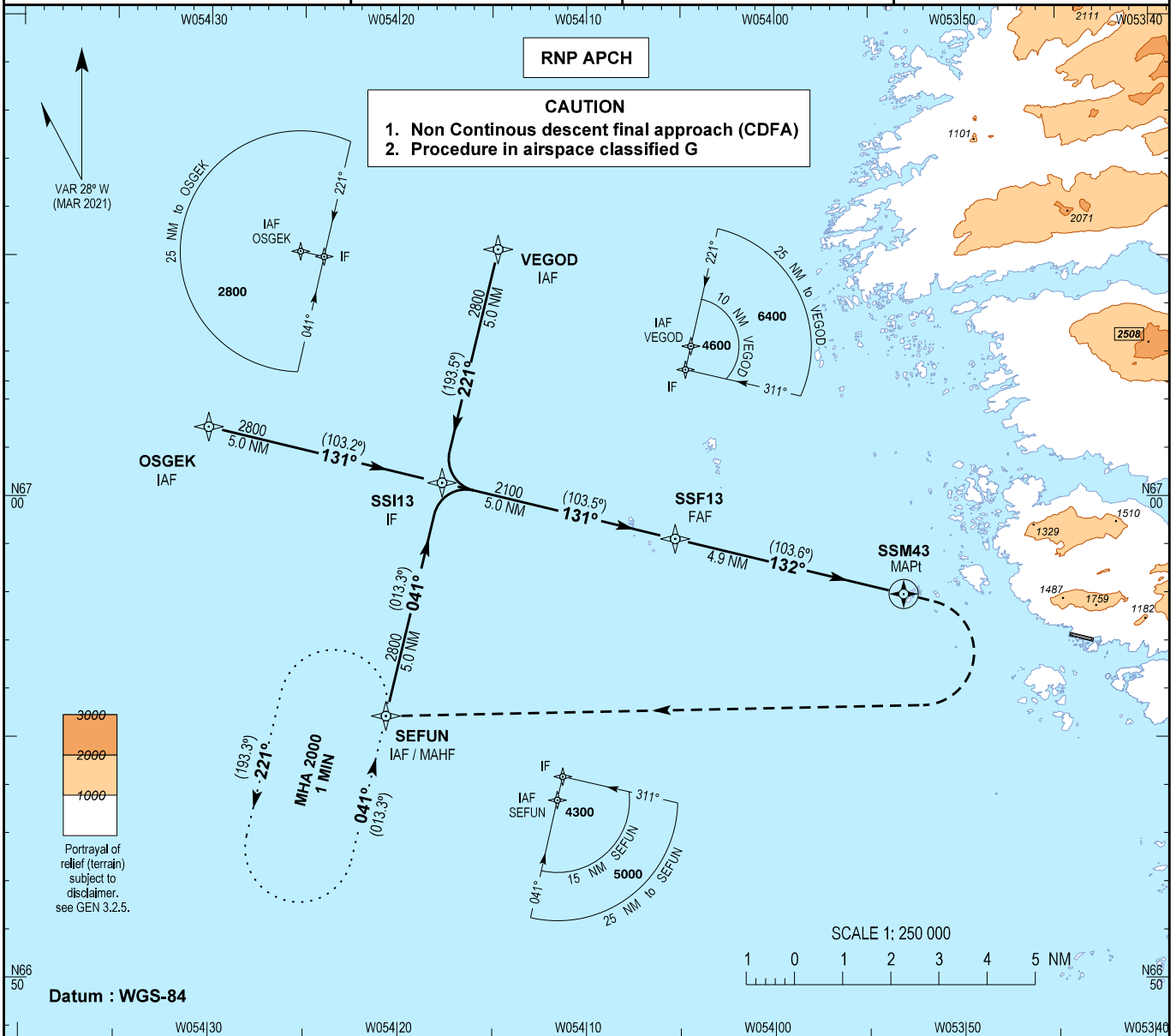
# INSTRUMENT APPROACH CHART - ICAO

AD ELEV : 33

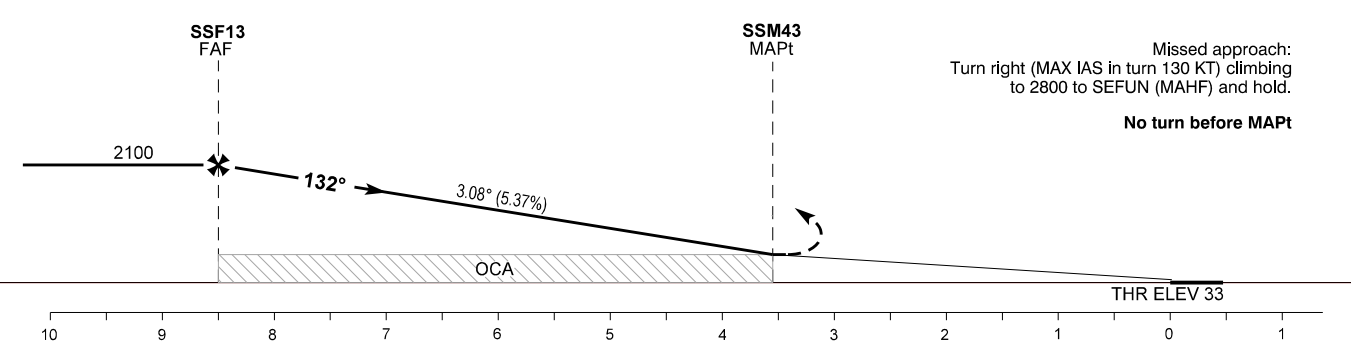
Bearings are magnetic (true)  
ELEV, ALT and HGT in FT

Sisimiut AFIS : 118.100

AD 2 - BGSS  
RNP Y RWY 13 - 1  
Sisimiut



TA 8000



Missed approach:  
Turn right (MAX IAS in turn 130 KT) climbing  
to 2800 to SEFUN (MAHF) and hold.  
**No turn before MAPt**

OCA (H)	A	B	Remarks
LNAV	500 (467)	500 (467)	Non CDFA
Circling	650 (617)	770 (737)	Only south of aerodrome

DIST to SSM43 NM	4.0	3.0	2.0	1.0
Altitude 3.08° Descent	1810	1480	1150	830

Time from FAF (SSF13) to MAPt (SSM43) - DIST 4.9 NM \*

GS	KT	80	100	120	140	160
Time	MIN:SEC	3:41	02:56	2:27	2:06	1:50
ROD 3.08° (5.37%)	FT/MIN	440	540	650	760	870

\* Timing not authorized for defining the MAPt.

Changes : Caution note "GPS qualifications required" withdrawn.