

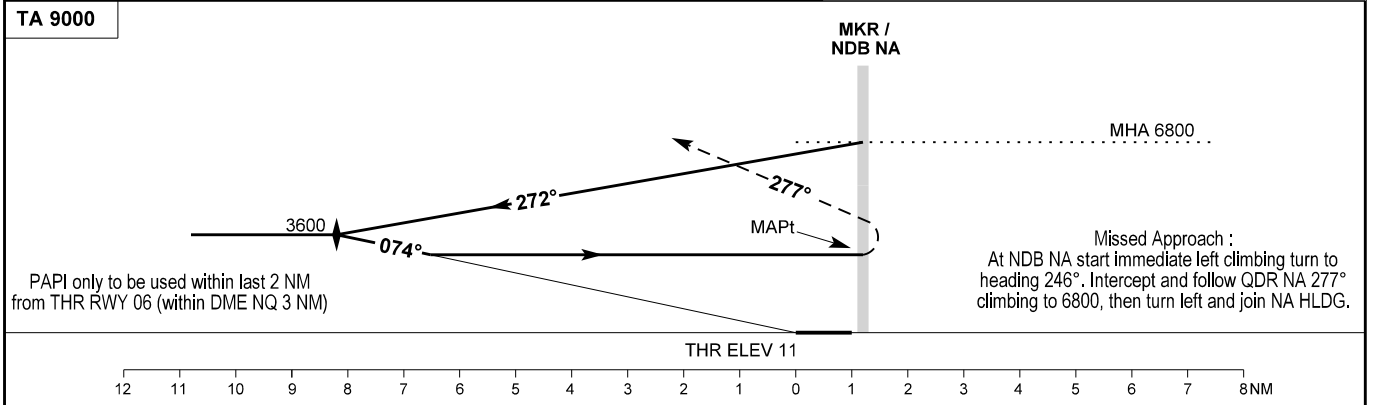
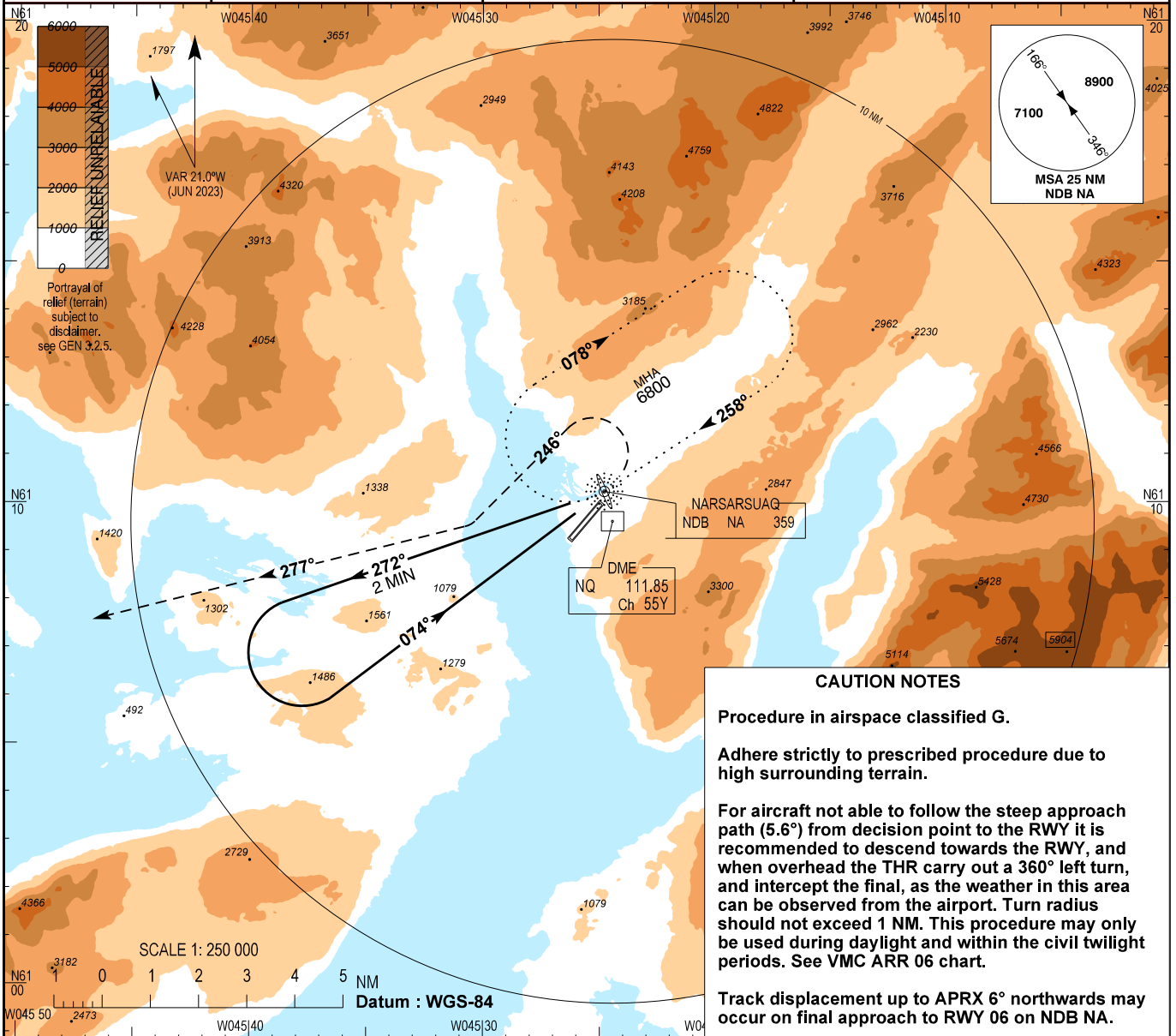
**INSTRUMENT
APPROACH
CHART - ICAO**

AD ELEV : 112

Bearings are magnetic
ELEV, ALT and HGT in FT

Narsarsuaq AFIS : 119.100

**AD 2 - BGBW
NDB V RWY 06
Narsarsuaq**



OCA (H)	A	B	SPECIAL CONDITIONS	
Straight in	2760 (2749)	2760 (2749)	MAX missed APCH turning speed 130 KT IAS. MNM 20° bank. Circling N of RWY only. If visual contact is lost during visual circling: Intercept and follow QDR NA 277° as soon as possible climbing to 6800, then turn left and join NA HLDG.	
Circling	2800 (2688)	2800 (2688)		
			State Minima : AD 2 - BGBW - 5	

Changes : Editorial.