

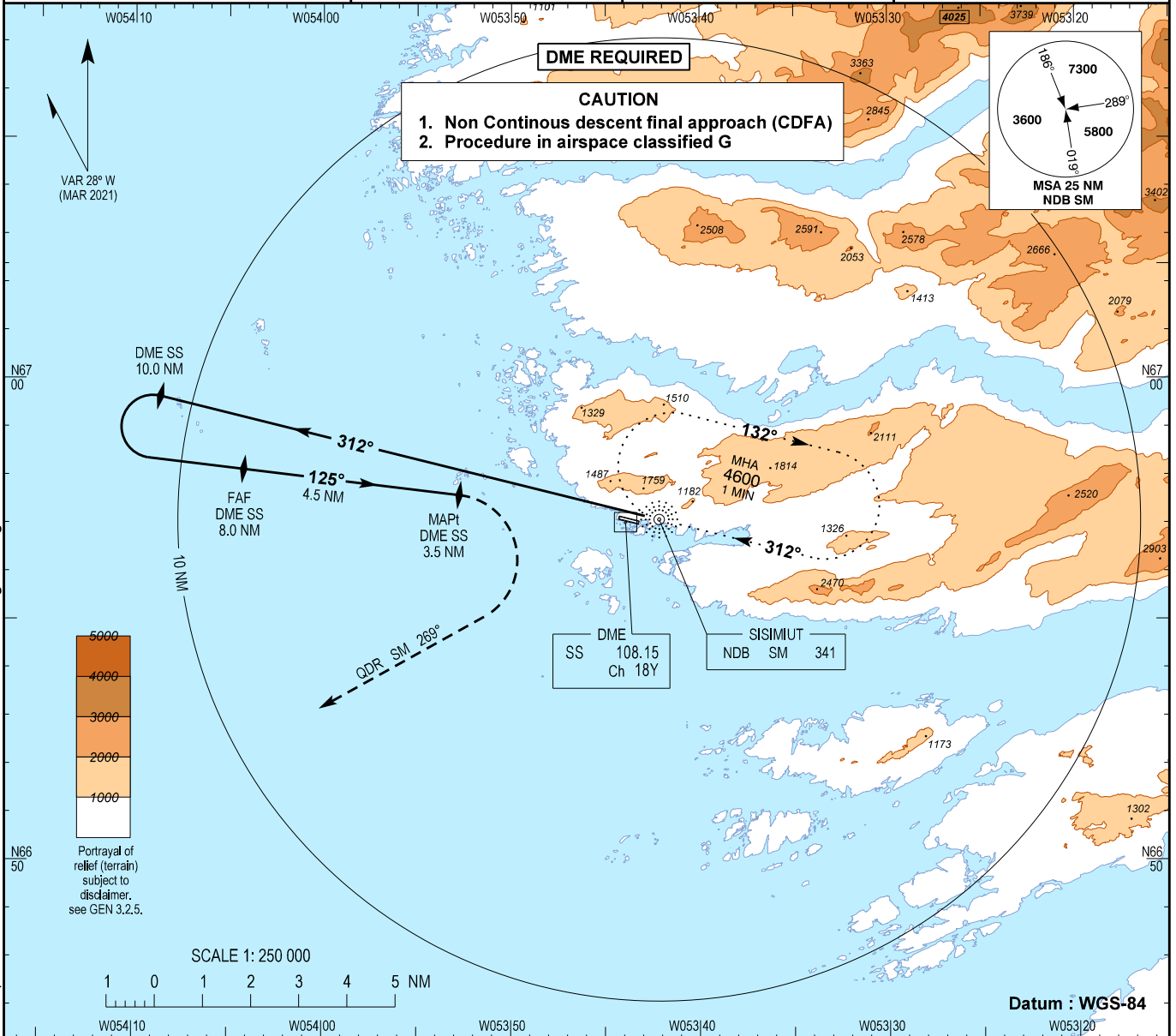
INSTRUMENT APPROACH CHART - ICAO

AD ELEV : 33

Bearings are magnetic
ELEV, ALT and HGT in FT

Sisimiut AFIS : 118.100

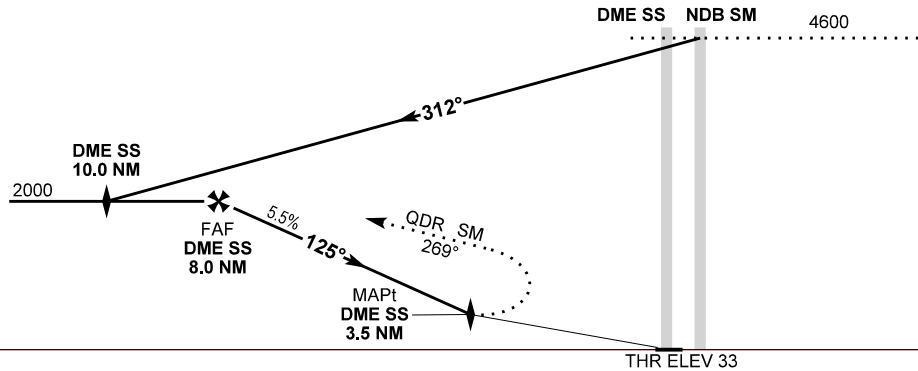
AD 2 - BGSS
NDB RWY 13
Sisimiut



Changes : Chart designator changed. Procedure updated with profile drawn as Non CDFA. VAR and MAG bearings changed.

TA 8000

Missed approach:
At DME SS 3.5 NM right turn
QDR SM 269° and climb to 4600.
MAX IAS 120 KT until established
on QDR SM 269°.
Right turn to NDB SM and hold.



OCA (H)	A	B	Remarks
NDB	500 (470)	500 (470)	Non CDFA
Circling	650 (620)	770 (740)	Only south of aerodrome

DME SS	7.0	6.0	5.0	4.0
ALT (3.15° descent)	1670	1330	1000	660