

INSTRUMENT APPROACH CHART - ICAO

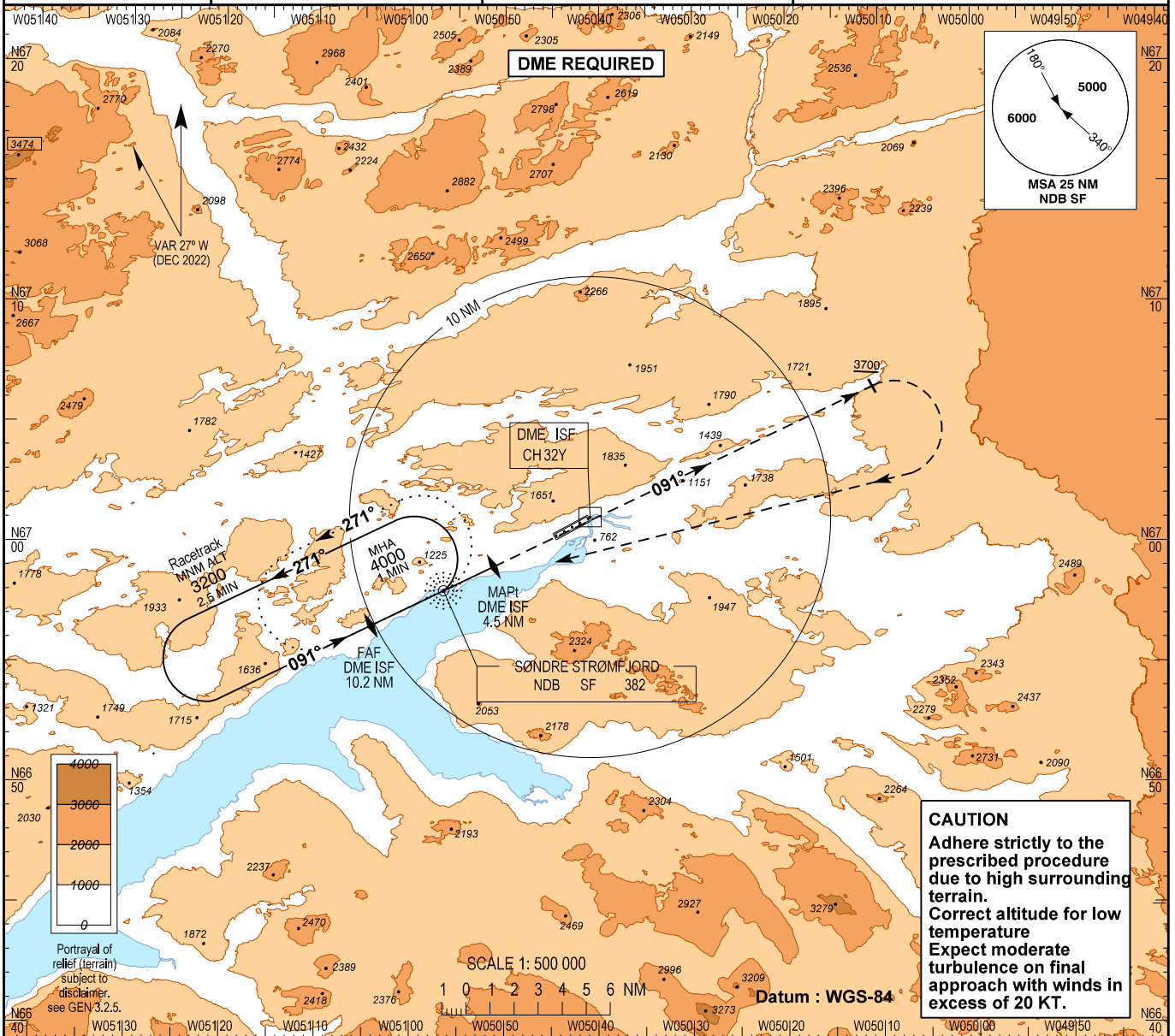
AD ELEV : 165

Bearings are magnetic
ELEV, ALT and HGT in FT

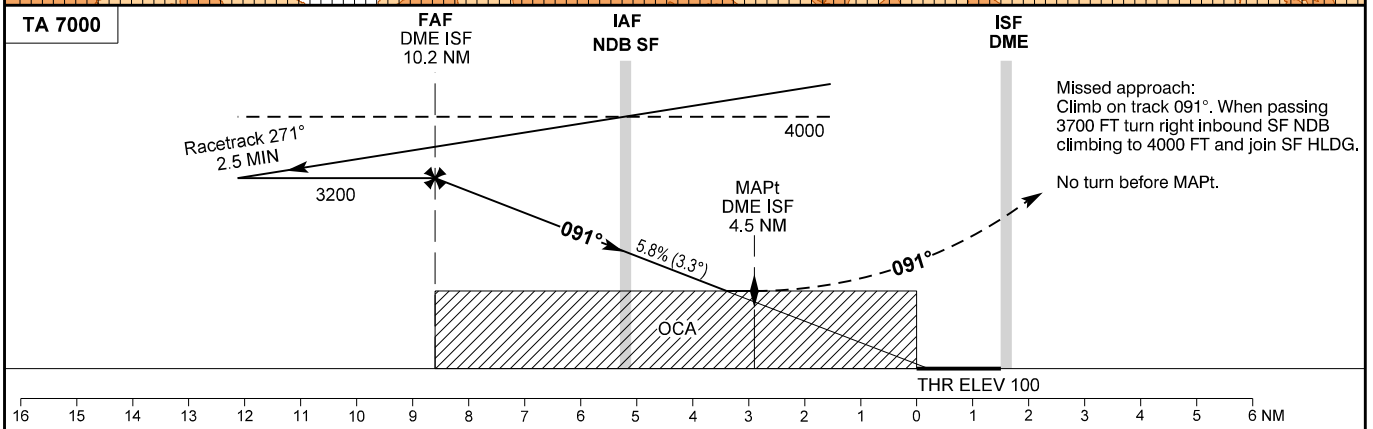
Sondrestrom APP : 126.200

Sondrestrom TWR : 118.300

AD 2 - BGSF
NDB Z RWY 09
(ACFT CAT A / B)
Kangerlussuaq



Changes : IAF and holding ALT added in profile view.



| TA 7000 | FAF DME ISF 10.2 NM | IAF NDB SF | ISF DME |
|------------|---------------------|-------------|---------|
| OCA (H) | A | B | |
| NDB / DME | 1450 (1340) | 1470 (1370) | |
| Circling * | 1500 (1335) | 1900 (1735) | |

| | | Time to MAPT (DME INK 4.5 NM) from FAF (DME INK 10.2 NM) - DIST 5.7 NM ** | | | | | |
|------|---------|---|-------|-------|-------|-------|-------|
| GS | KT | 80 | 100 | 120 | 140 | 160 | 180 |
| Time | MIN:SEC | 04:17 | 03:25 | 02:51 | 02:27 | 02:08 | 01:54 |
| ROD | FT/MIN | 470 | 590 | 710 | 830 | 950 | 1070 |

* Only south of aerodrome
** Timing not authorized for defining the MAPT.

| | | | | | | | |
|-------------|----|------|------|------|------|------|-----|
| DME ISF | NM | 10 | 9 | 8 | 7 | 6 | 5 |
| DIST to THR | NM | 8.4 | 7.4 | 6.4 | 5.4 | 4.4 | 3.4 |
| ALT | FT | 3130 | 2770 | 2410 | 2060 | 1700 | OCA |