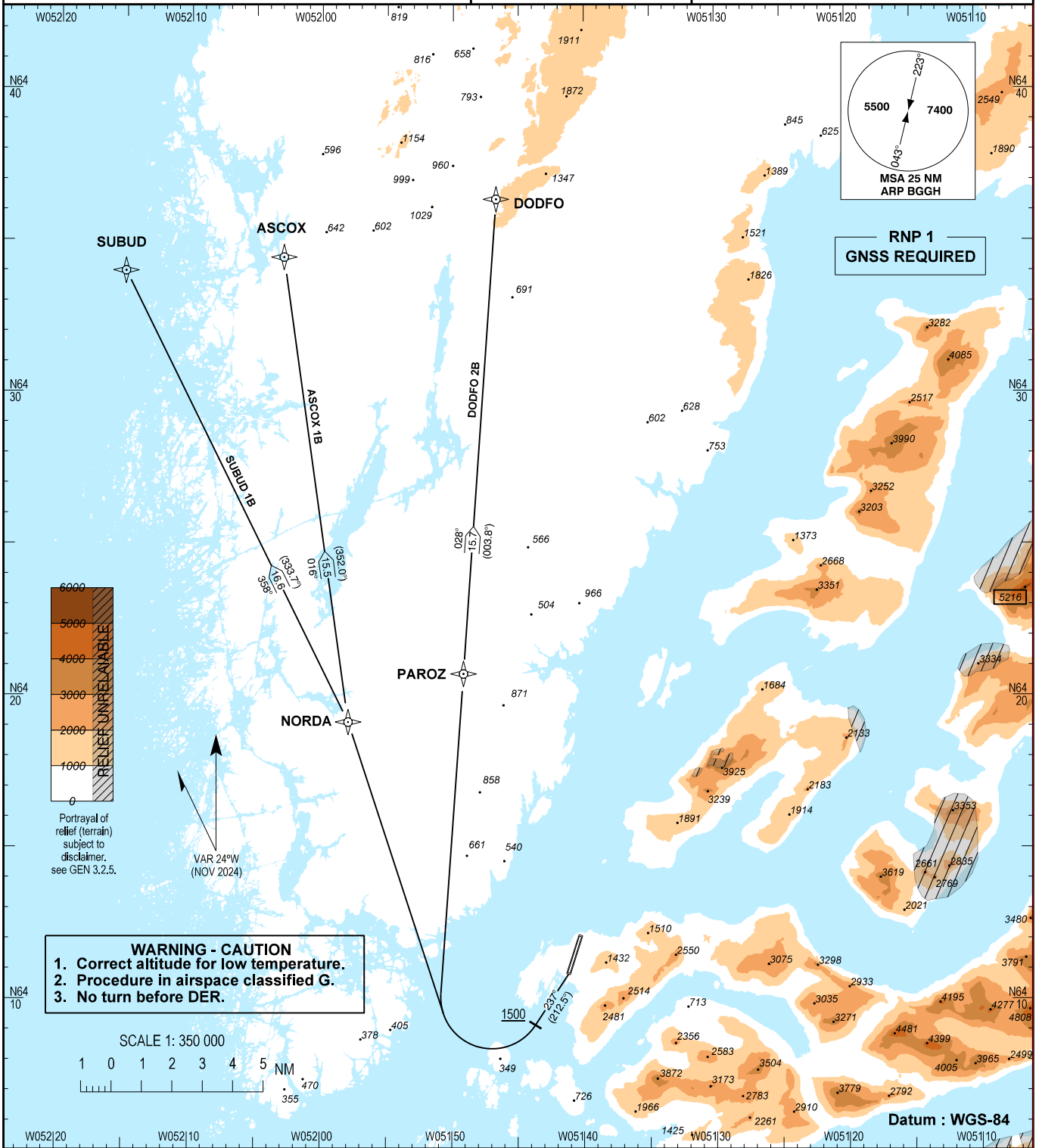


STANDARD DEPARTURE CHART - INSTRUMENT (SID) - ICAO

TA : 7000 FT
 Bearings are magnetic (true)
 ELEV / ALT in FT
 DIST in NM

AD 2 - BGGH
 RNP SID RWY 22 N - 1
 Nuuk
 SUBUD 1B, ASCOX 1B, DODFO 2B



Changes : WPT GH503 and GH505 withdrawn, WPT NORDA and PAROZ added.

GS (KT)	100	150	200	250	300
3.3% Climb gradient ft/min	335	505	670	835	1005