

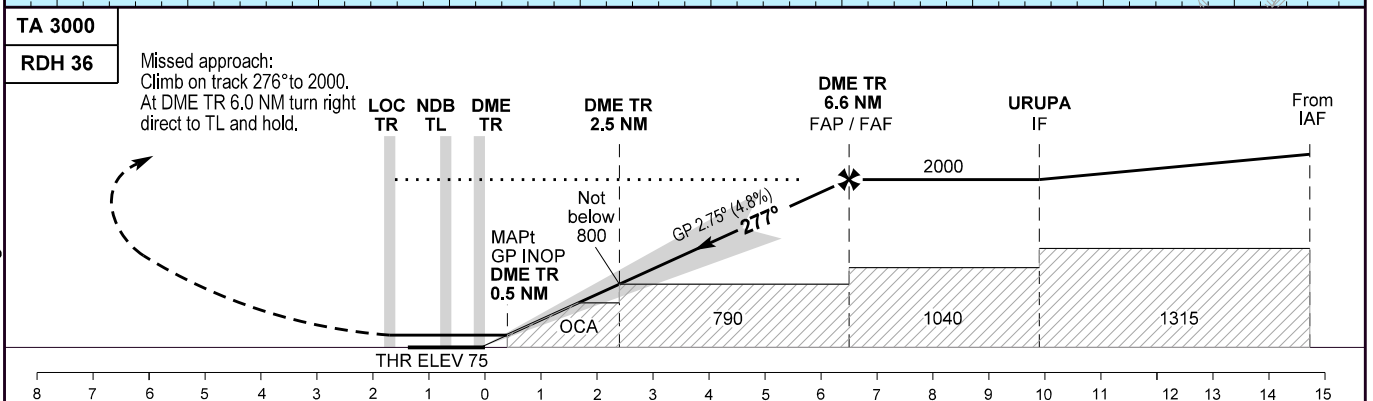
# INSTRUMENT APPROACH CHART - ICAO

AD ELEV : 82

Bearings are magnetic  
ELEV, ALT and HGT in FT

Aarhus APP : 119.280  
Aarhus TWR : 118.530  
ATIS : 125.155

AD 2 - EKAH  
ILS RWY 28L  
(CAT I + II)  
Aarhus



Changes : ATIS FREQ changed.

OCAs (H)	A	B	C	D	SPECIAL CONDITIONS
ILS CAT I	210 (135)	217 (142)	227 (152)	236 (161)	* Cross DME TR 2.5 NM not below 800
ILS CAT II	123 (48)	134 (59)	146 (71)	160 (85)	
GP INOP *	480 (410)	480 (410)	480 (410)	480 (410)	
Circling	570 (490)	680 (600)	1060 (980)	1180 (1100)	

Timing not authorized for defining the MAPt

DME TR	NM	6	5	4	3	2	1
DIST to THR	NM	5.87	4.87	3.87	2.87	1.87	0.87
ALT		1840	1550	1260	965	675	385