

**INSTRUMENT  
APPROACH  
CHART - ICAO**

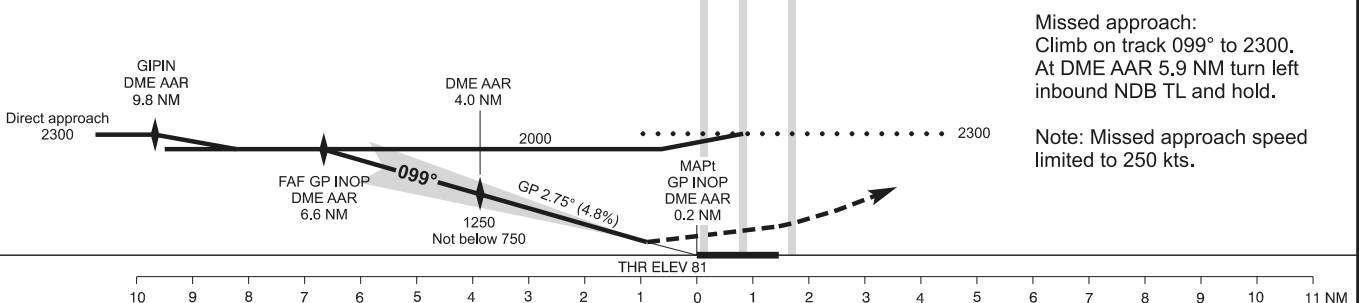
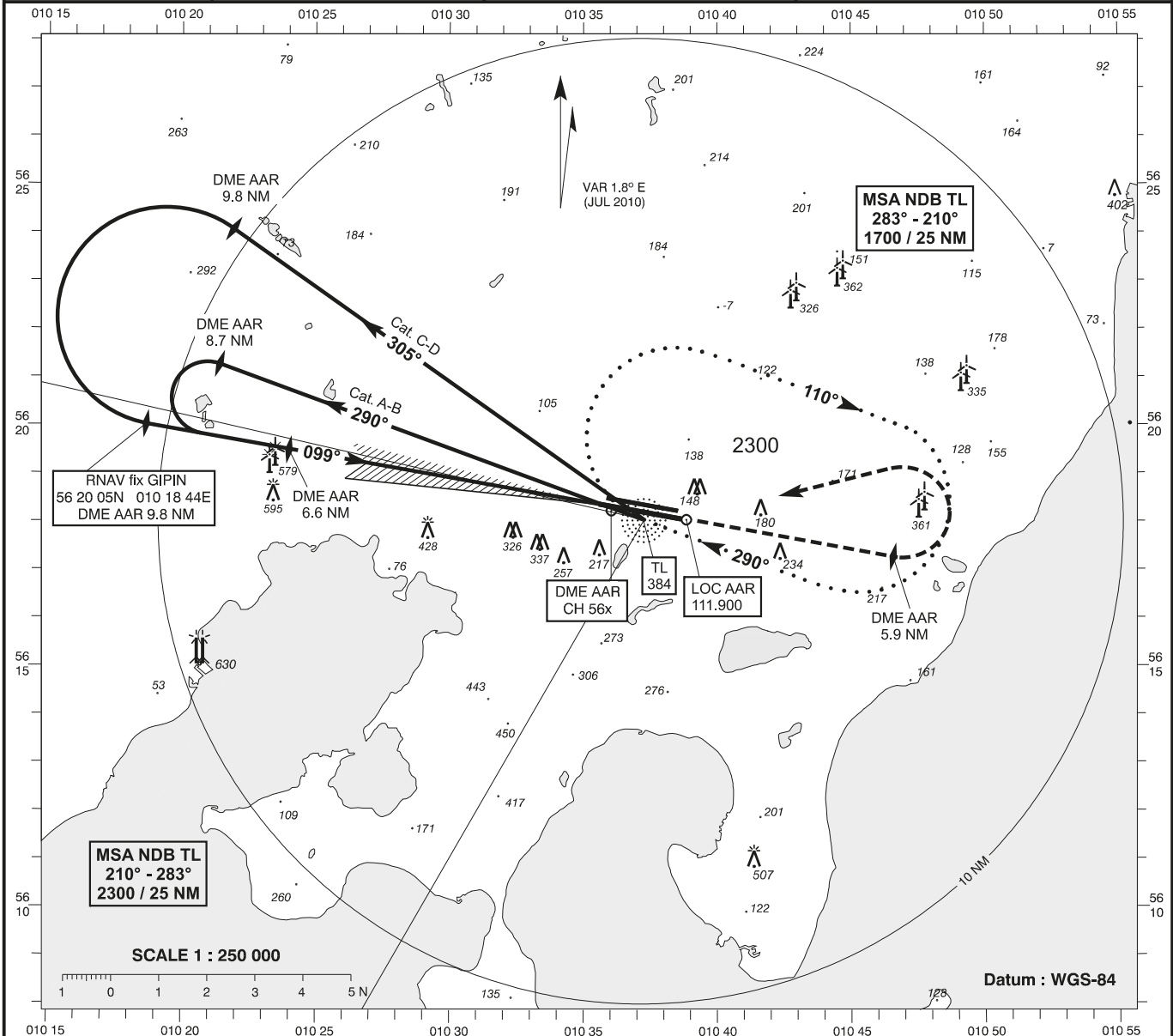
AD ELEV : 82

Bearings are magnetic  
ELEV, ALT and HGT in FT

Aarhus APP : 119.275

Aarhus TWR: 118.525

**AD 2 - EKAH  
ILS/DME 10R  
Aarhus**



Changes: MSA changed

OCA (H)	A	B	C	D	SPECIAL CONDITIONS		
ILS	261 (180)	271 (190)	280 (199)	290 (209)	* Pass DME AAR 4.0 NM not below 750 Timing not authorized for defining MAPt.		
GP INOP *	480 (400)	480 (400)	480 (400)	480 (400)			
Circling	640 (560)	730 (650)	970 (890)	970 (890)			
DME AAR NM	1	2	3	4		5	6
DIST to THR NM	0.8	1.8	2.8	3.8		4.8	5.8
ALT	370	660	950	1250	1540	1830	