

**INSTRUMENT  
APPROACH  
CHART - ICAO**

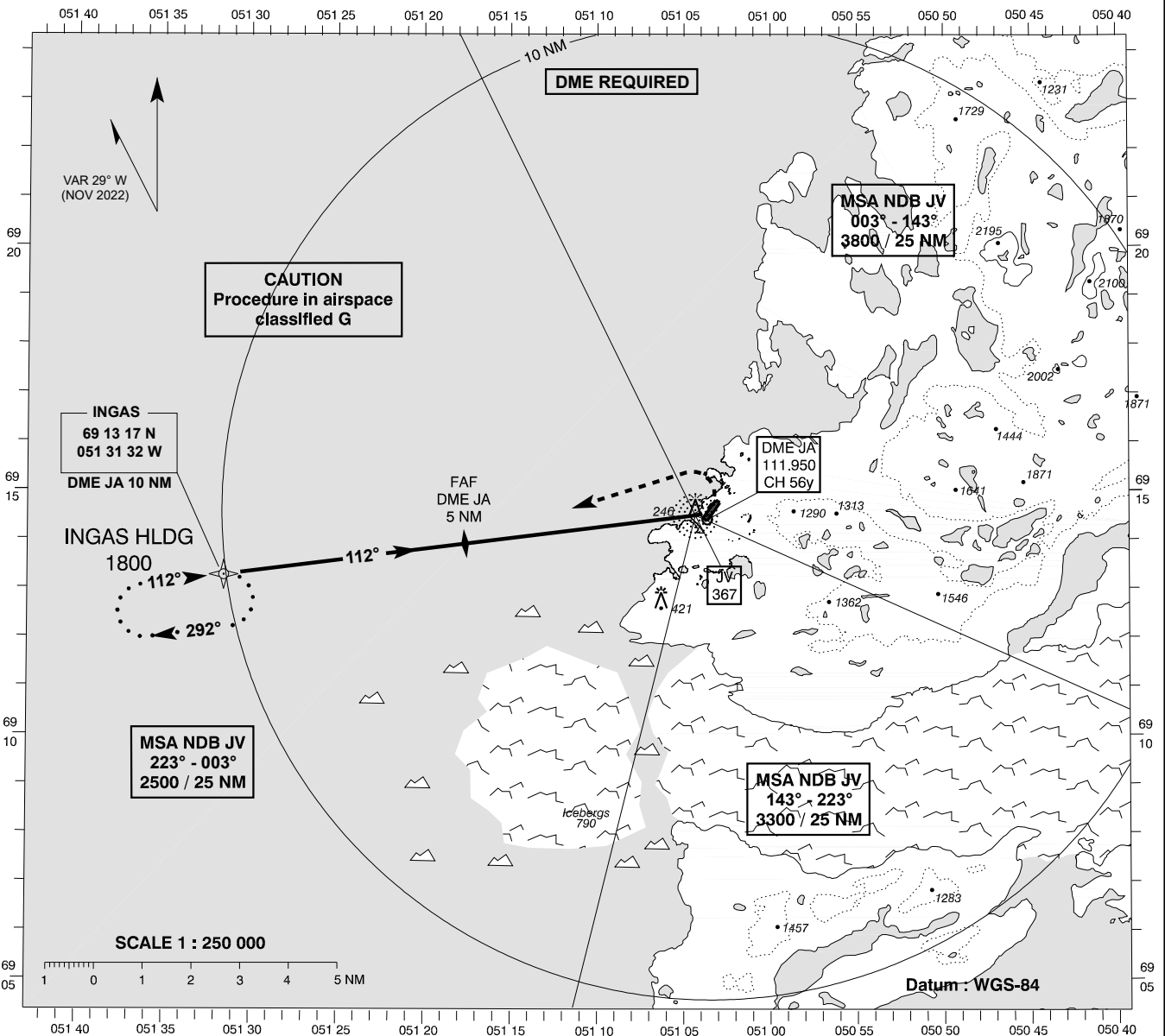
AD ELEV : 95

Bearings are magnetic  
ELEV, ALT and HGT in FT

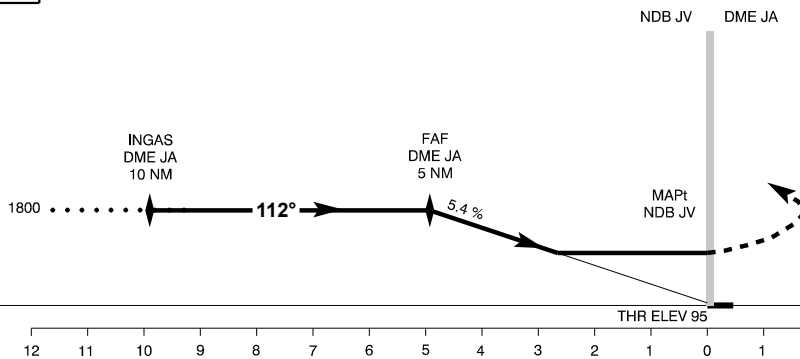
Ilulissat AFIS : 119.100

**AD 2 - BGJN  
NDB X RWY 06  
Ilulissat**

Changes: VAR and MAG bearings changed. Chart designator changed from H NDB+DME 07 to NDB X RWY 06. Note "DME REQUIRED" added.



**TA 6000**



Missed Approach :  
Turn left and  
intercept QDR JV 292°  
and join INGAS HLDG  
at 1800.

OCA (H)	H	SPECIAL CONDITIONS
NDB	1040 (945)	