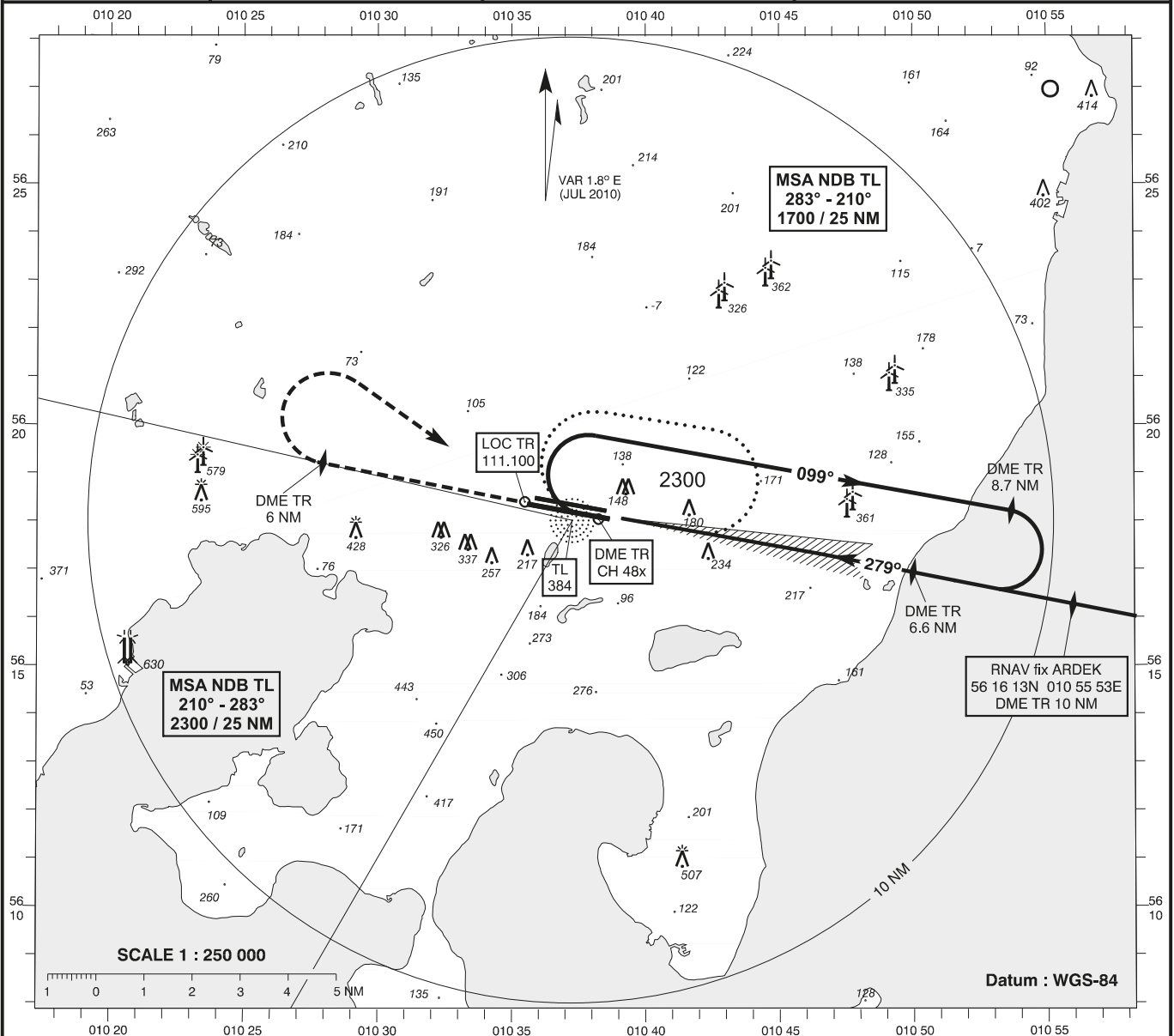


**INSTRUMENT  
APPROACH  
CHART - ICAO**

AD ELEV: 82  
Bearings are magnetic  
ELEV, ALT and HGT in FT

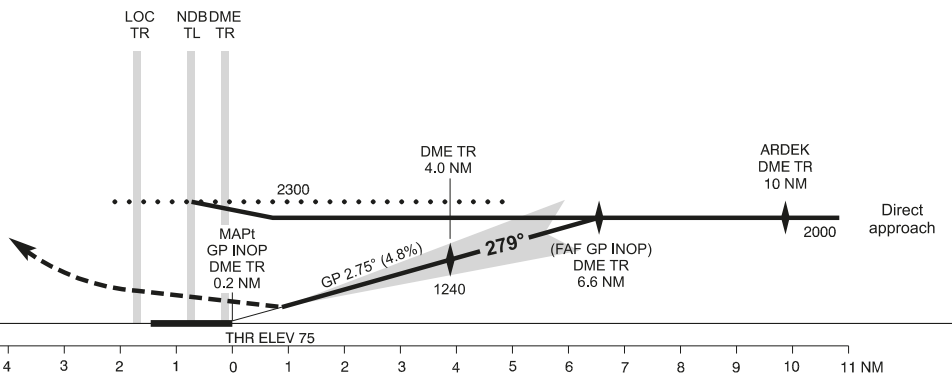
Aarhus APP : 119.275  
Aarhus TWR: 118.525

**AD 2 - EKAH**  
**ILS / DME 28L (CAT I+II)**  
**(ACFT CAT A / B)**  
**Aarhus**



**TA 3000**  
**RDH 36**

Missed approach:  
Climb on track 279° to 2300.  
At DME TR 6 NM turn right  
inbound NDB TL and hold.



Changes: MSA changed

OCA (H)	A	B	SPECIAL CONDITIONS				
ILS / DME CAT I	254 (179)	264 (189)					
ILS / DME CAT II	118 (43)	135 (60)					
GP INOP *	490 (420)	490 (420)	* Timing not authorized for defining the MAPt.				
Circling	640 (560)	730 (650)					
DME TR NM	1	2	3	4	5	6	
DIST to THR NM	0.9	1.9	2.9	3.9	4.9	5.9	
ALT	370	660	950	1250	1540	1830	