

# INSTRUMENT APPROACH CHART - ICAO

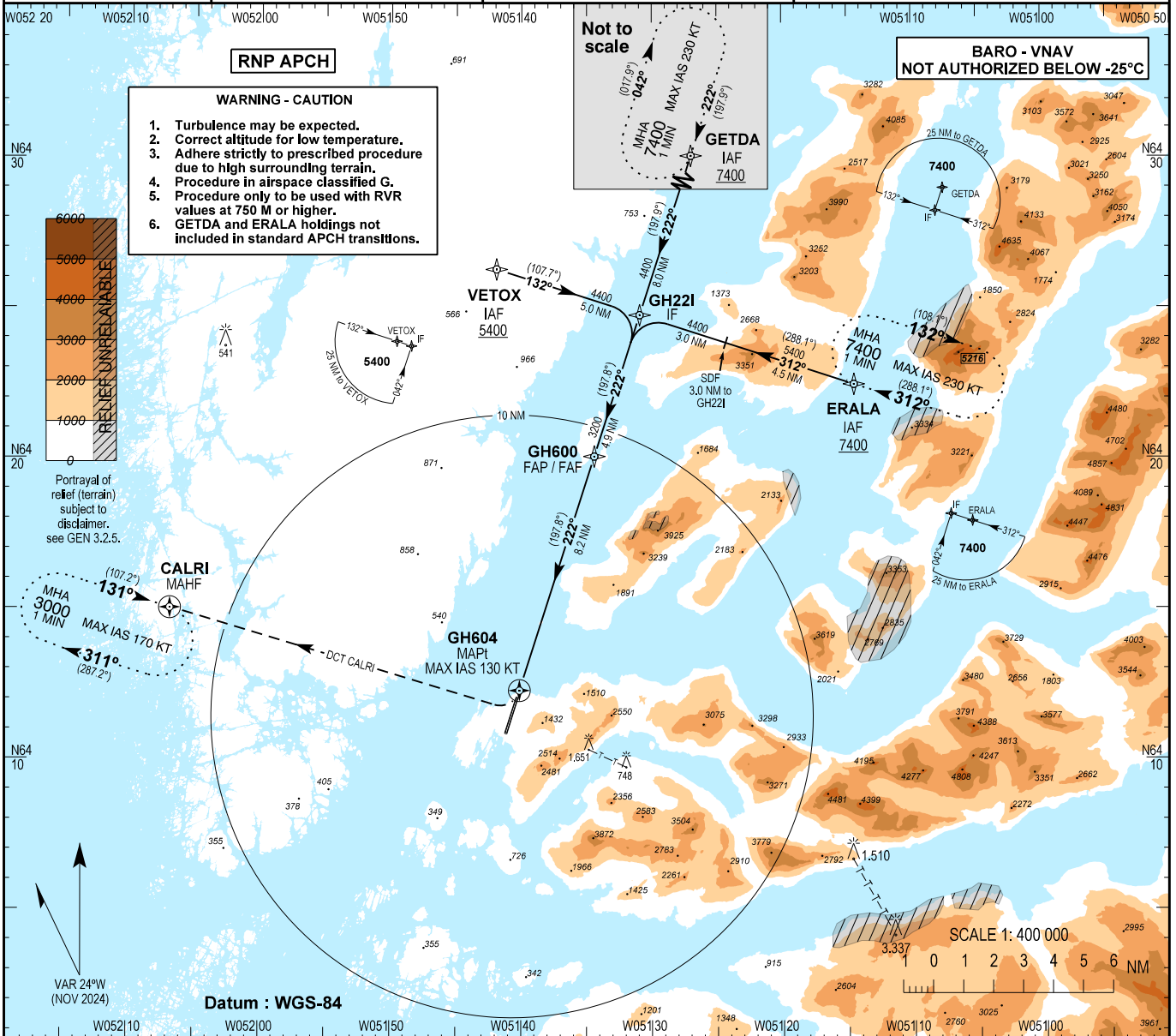
AD ELEV : 277

Bearings are magnetic (true)  
ELEV, ALT and HGT in FT

Nuuk AFIS : 119.100

ATIS : 123.000

AD 2 - BGGH  
RNP Z RWY 22 - 1  
Nuuk



**WARNING - CAUTION**

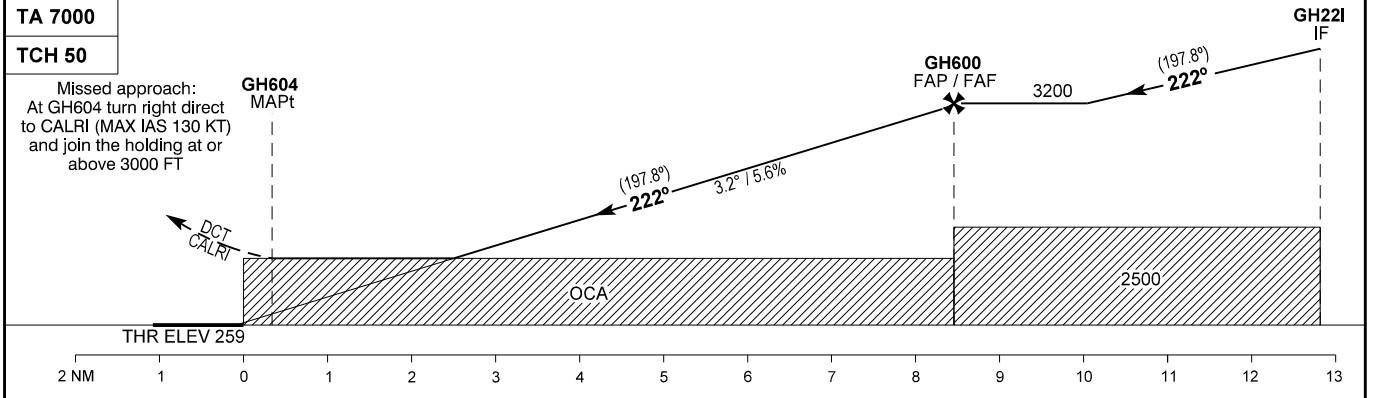
1. Turbulence may be expected.
2. Correct altitude for low temperature.
3. Adhere strictly to prescribed procedure due to high surrounding terrain.
4. Procedure in airspace classified G.
5. Procedure only to be used with RVR values at 750 M or higher.
6. GETDA and ERALA holdings not included in standard APCH transitions.



Portrayal of relief (terrain) subject to disclaimer. see GEN 3.2.5.

VAR 24°W (NOV 2024)

Datum : WGS-84



OCA (H)		A	B
LNAV / VNAV	Climb 2.5%	1310 (1051)	1320 (1061)
	Climb 5.0%	1100 (841)	1120 (861)
LNAV	Climb 2.5%	1540 (1281)	1550 (1291)
Circling *		1540 (1263)	1550 (1273)

\* Only W of aerodrome

DIST to THR22	0.3	1.3	2.3	3.3	4.3	5.3	6.3	7.3	8.3
DIST to GH604	0.0	1.0	2.0	3.0	4.0	5.0	6.0	7.0	8.0
ALT	420	760	1100	1440	1770	2110	2450	2790	3130

GS	KT	80	100	120	140	160
Time to THR22 from FAP/FAF (GH600) - DIST 8.5 NM **						
Time	MIN:SEC	06:22	05:06	04:15	03:38	03:11
Time to MAPt (GH604) from FAP/FAF (GH600) - DIST 8.2 NM **						
Time	MIN:SEC	06:08	04:55	04:05	03:30	03:04
ROD	FT/MIN	450	570	680	790	910

\*\* Timing not authorized for defining the MAPt.

Changes : OBST Akia added.