

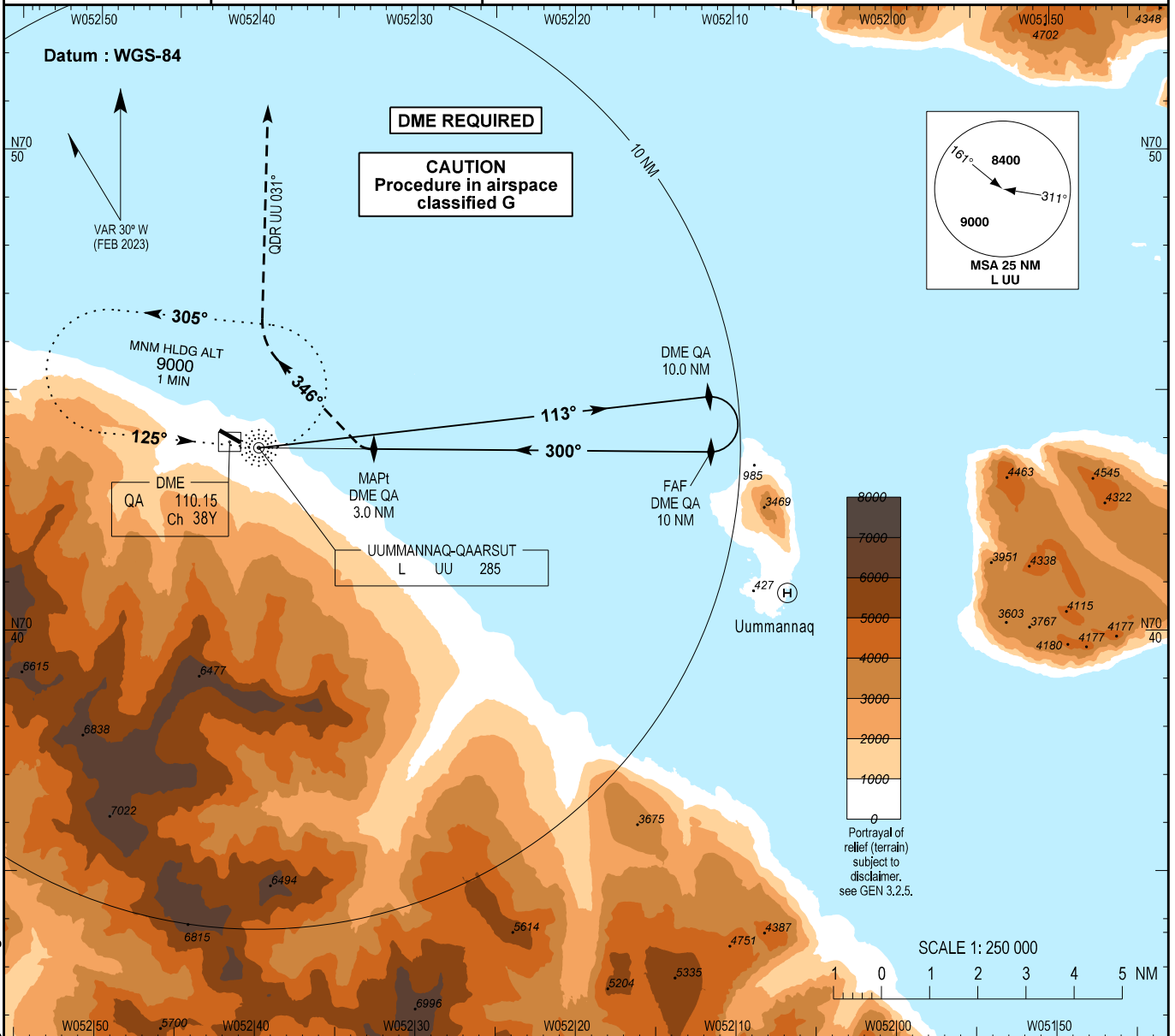
**INSTRUMENT APPROACH CHART - ICAO**

AD ELEV : 289

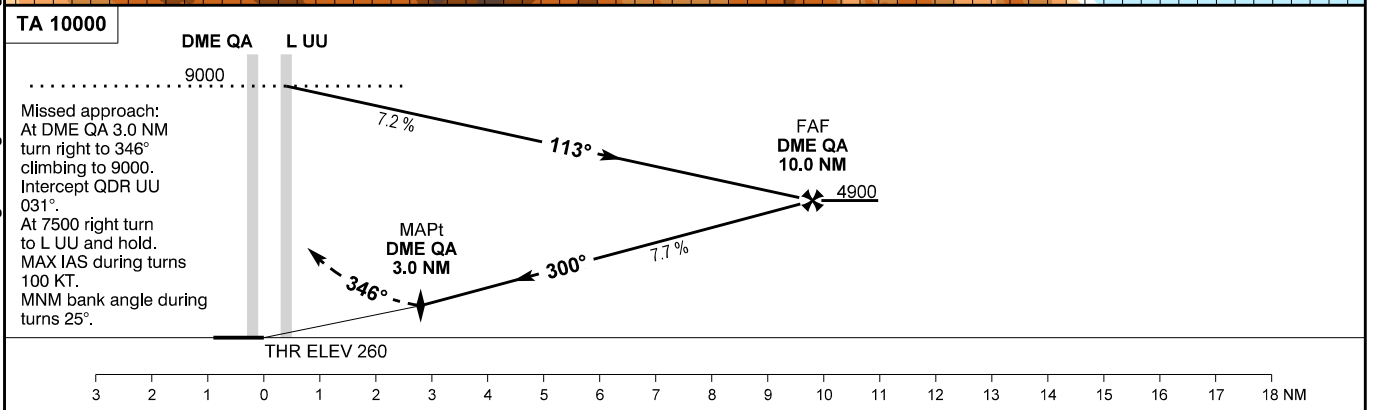
Bearings are magnetic  
ELEV, ALT and HGT in FT

Qaarsut AFIS : 119.500

**AD 2 - BGUQ  
NDB C  
Uummannaq / Qaarsut**



Changes: VAR and MAG bearings changed. Chart designator changed.



OCA (H)	A	SPECIAL CONDITIONS							
Circling *	1150 (860)	* Only northeast of aerodrome							
Time to MAPt from FAF - DIST 7.0 NM									
GS	KT	60	70	80	90	100	110	120	Timing not authorized for defining the MAPt.
Time	MIN:SEC	07:00	06:00	05:15	04:40	04:12	03:49	03:30	
ROD	FT/MIN	468	546	624	702	780	858	936	
DME QA		3	4	5	6	7	8	9	
DIST to THR 33		2.8	3.8	4.8	5.8	6.8	7.8	8.8	9.8
ALT		1645	2110	2280	3045	3515	3985	4450	4900