

**INSTRUMENT
APPROACH
CHART - ICAO**

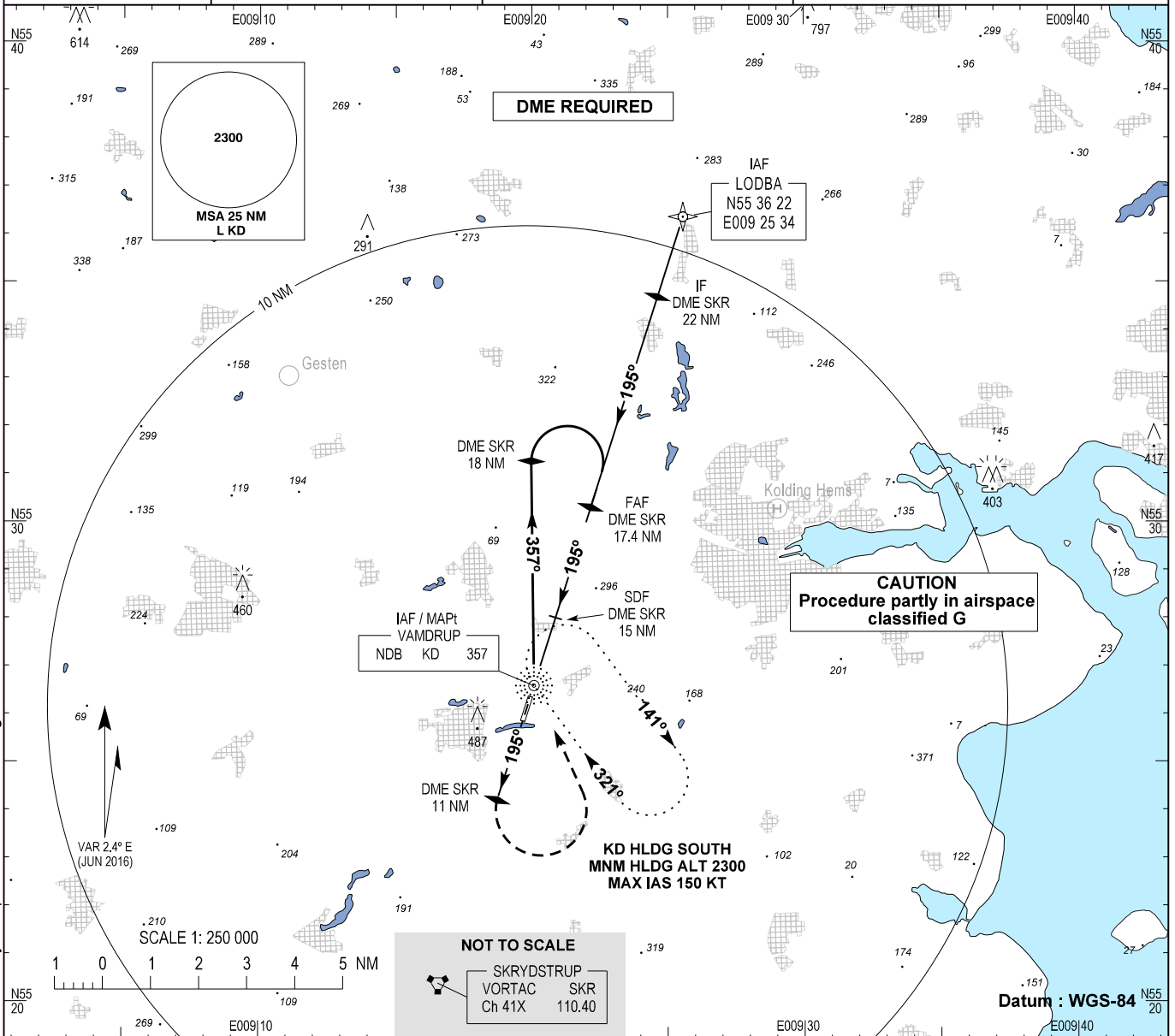
AD ELEV : 141

Bearings are magnetic
ELEV, ALT and HGT in FT

Skrydstrup APP : 124.100 315.100

Vamdrup Information : 118.650

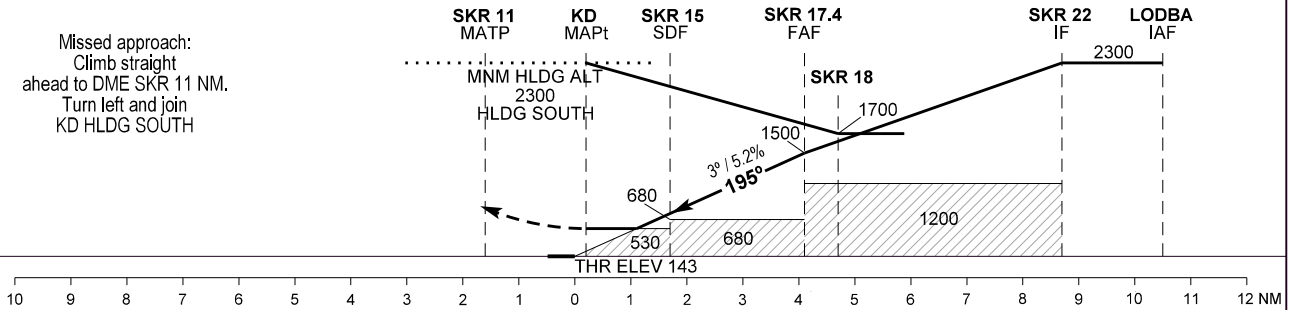
**AD 2 - EKVD
NDB RWY 19
Kolding / Vamdrup**



Changes : AD ELEV changed. Vamdrup information FREQ and Skrydstrup APP UHF FREQ changed

TA 3000

Missed approach:
Climb straight
ahead to DME SKR 11 NM.
Turn left and join
KD HLDG SOUTH



OCA (H)	A	B	SPECIAL CONDITIONS					
NDB	530 (390)	530 (390)						
Circling*	590 (450)	690 (550)	*East of aerodrome only					
GS	70	80	90	100	110	120	130	140
FAF - MAPt (3.9 NM)**	3:19	2:54	2:35	2:19	2:07	1:56	1:47	1:39
Rate of Descent	371	425	478	531	584	637	690	743
SKR DME NM	15.0	16.0	17.0					
DIST to THR 19 NM	1.7	2.7	3.7					
Altitude 3.0° Descent	735	1055	1375					

**Timing not authorized for defining the MAPt