

INSTRUMENT APPROACH CHART - ICAO

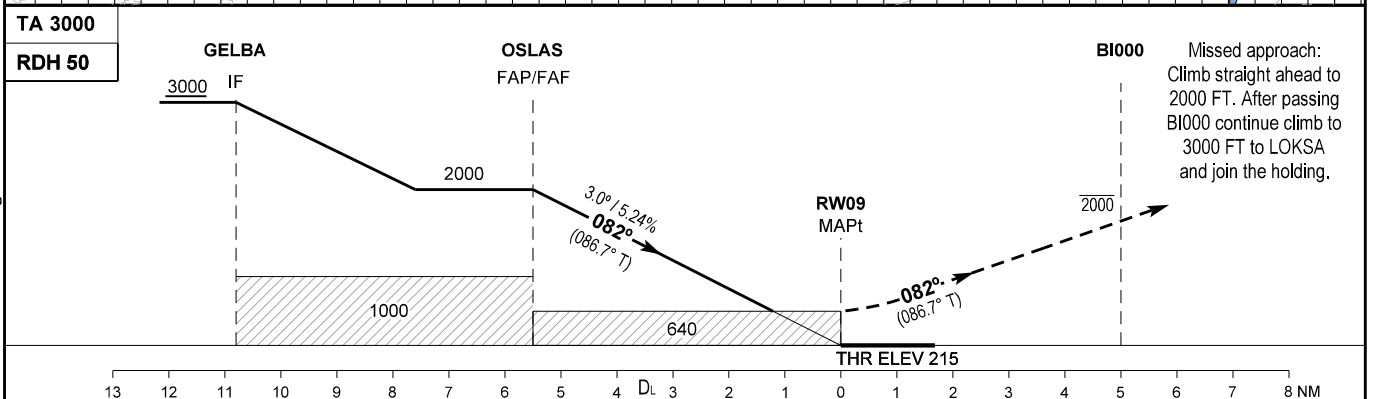
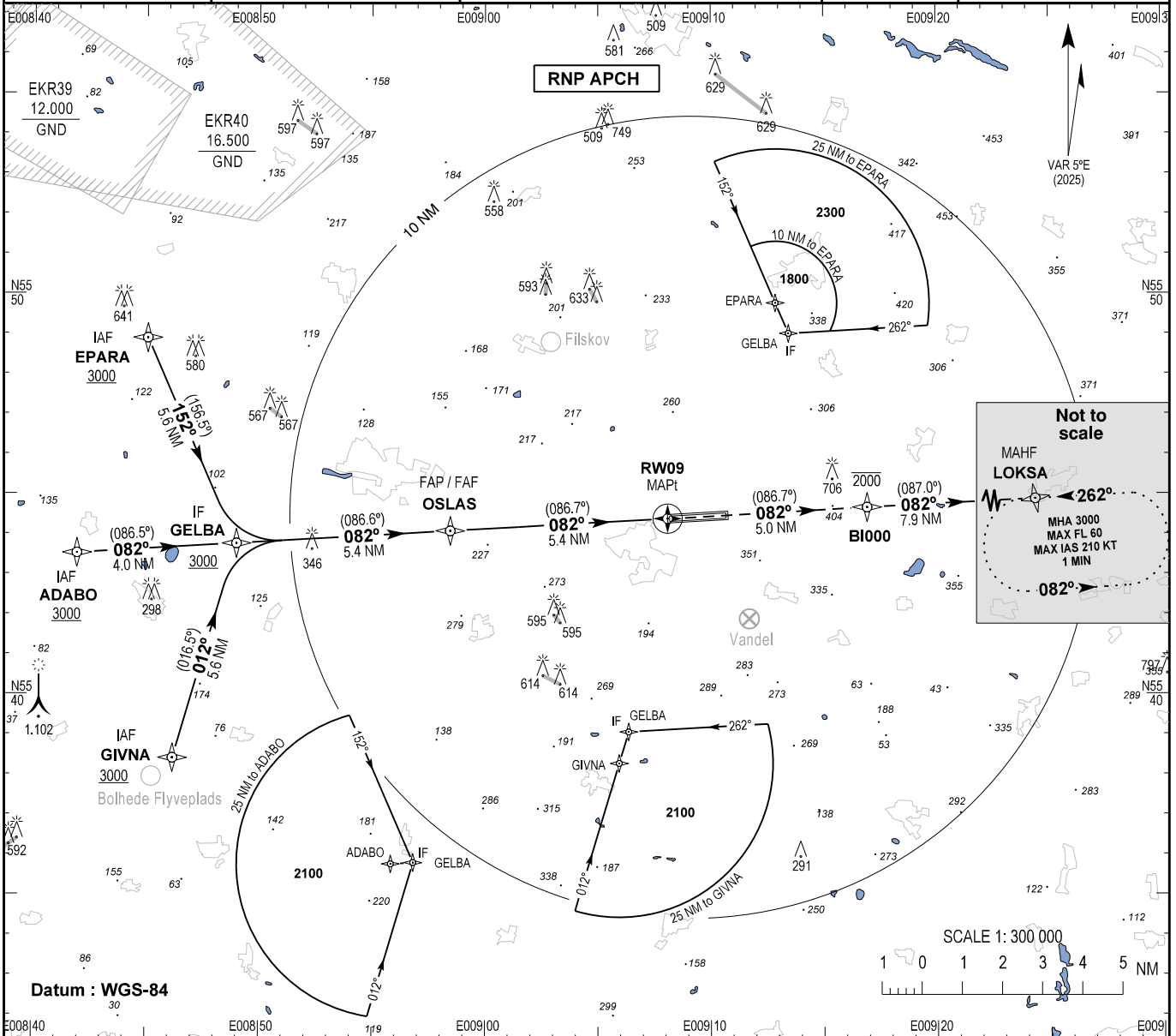
AD ELEV : 246

Bearings are magnetic (true)
ELEV, ALT and HGT in FT

Billund APP : 127.580
Billund TWR: 119.005 (ARR)
129.505 (DEP)
ATIS : 118.780 (ARR) 129.105 (DEP)

EGNOS :
CH 57711
E09A

AD 2 - EKBI
RNP RWY 09 - 1
Billund



Changes : VAR and AD ELEV changed.

OCA (H)	A	B	C	D	D _L	SPECIAL CONDITIONS
LPV	356 (141)	363 (148)	373 (158)	386 (171)	391 (176)	*Not to be used below -25°C.
LNAV/VNAV*	530 (315)	540 (325)	550 (335)	560 (345)	560 (345)	
LNAV	640 (425)	640 (425)	640 (425)	640 (425)	640 (425)	
Circling**	800 (553)	820 (573)	1140 (893)	1140 (893)	1140 (893)	**N of AD only.
DIST to RW09	NM	5.0	4.0	3.0	2.0	
Nominal altitude		1857	1539	1220	902	