

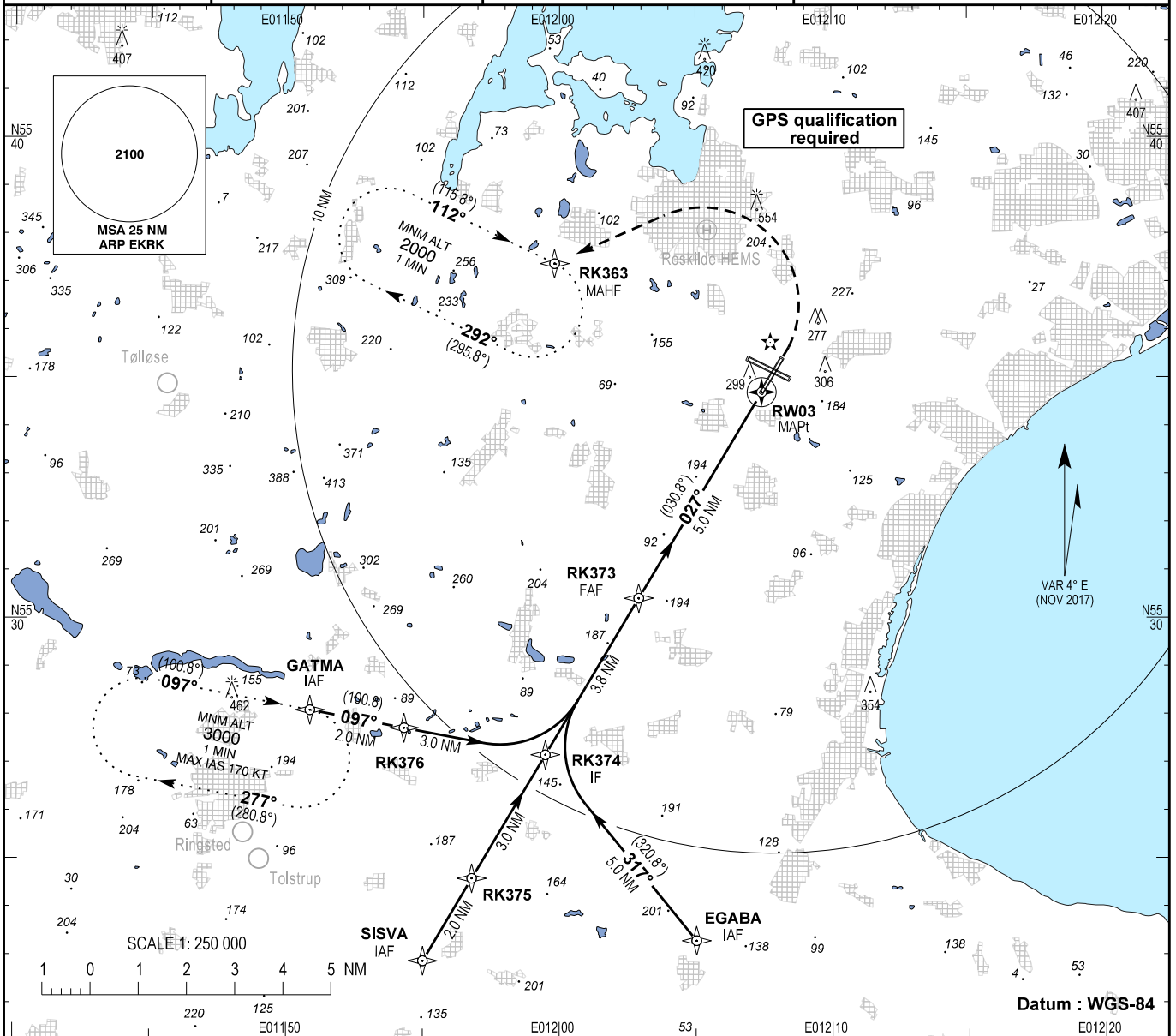
INSTRUMENT APPROACH CHART - ICAO

AD ELEV : 146

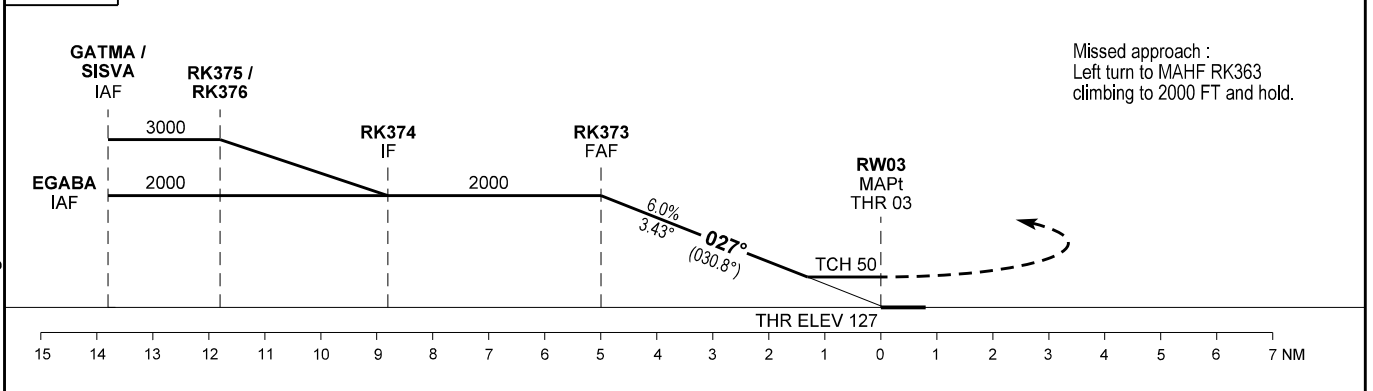
Bearings are magnetic (True)
ELEV, ALT and HGT in FT

Roskilde APP : 125.530
Roskilde TWR : 118.905 119.655
ATIS : 123.805

AD 2 - EKRK
RNAV (GNSS) RWY 03 - 1
København / Roskilde



TA 5000



Missed approach :
Left turn to MAHF RK363
climbing to 2000 FT and hold.

Changes : FREQ changed.

OCA (H)	A	B	C	SPECIAL CONDITIONS					
LNAV	630 (510)	630 (510)	630 (510)	DIST to THR	1	2	3	4	5
Circling	630 (490)	850 (710)	950 (810)	ALT	540	905	1270	1635	2000

Time to MAPt from FAF - DIST 5.0 NM					
GS (KT)	60	80	100	120	140
MM : SEC	05:00	03:45	03:00	02:30	02:09
ROD FT / MIN	365	485	610	730	850